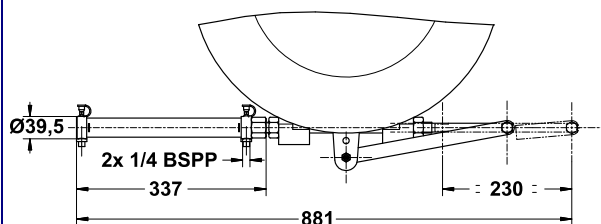


HYDRAULIC STEERING SYSTEMS FOR OUTBOARD MOTORS



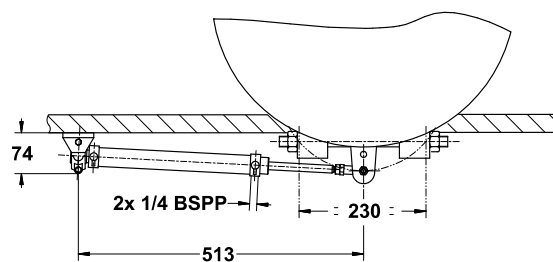
SIDE MOUNTED STEERING

- Maxi motor power **175 H.P.** **2200951 LS 26 A**
(Pump 26 HB with lock valve + fitt. + VHM 28 ST HB + fitt + 8m of flex tube)
- Maxi motor power **175 H.P.** **2200952 LS 26 B**
(Pump 26 HB with lock valve + fitt. + VHM 28 ST HBR + fitt + 8m of flex tube)
- Maxi motor power **300 H.P.** **2201327 LS 32 HB**
(Pump 30 HB with lock valve + fitt. + VHM 32 ST HB + fitt + 8m of flex tube)



- 2200033** VHM 28 ST HB **Weight: 1.4 kg**
2200608 VHM 32 ST HB **Weight: 1.4 kg**

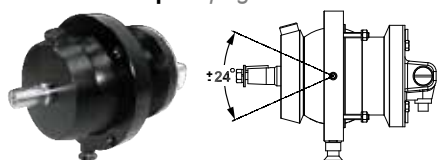
Code of elements that can make up a complete kit		Type of pump
2200948	Pump 26 HB with lock valve	2200948 26 HB with lock valve(*)
2200950	Pump 30 HB with lock valve	
2200033	Cylinder VHM 28 ST HB	
2200196	Cylinder VHM 28 ST HBR	
2200608	Cylinder VHM 32 ST HB	
2200021	Set of pump fittings	2200950 30 HB with lock valve(*)
2200022	Set of cylinder fittings	
2200038	Set of pump s/steel fittings	
2200023	Set of cylinder s/steel fittings	
2200047	Set of tees for Ø8 mm flex. tube	
2200024	Ø8 flexible tube (per metre)	(*)Available in tilt HB 5 version
2202041	Tie rod 470 – 710 mm	
2200017	Oil (2 litre can)	



- 2200196** VHM 28 ST HBR **Weight: 1.1 kg**

OPTION

HB 5 Tilt Pumps – page 17



ACCESSORIES

TIE RODS - page 22



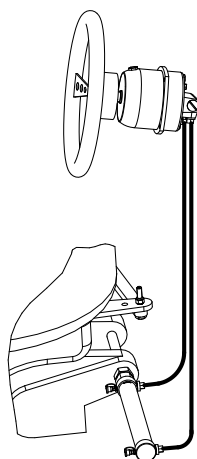
STEERING WHEELS - page 23



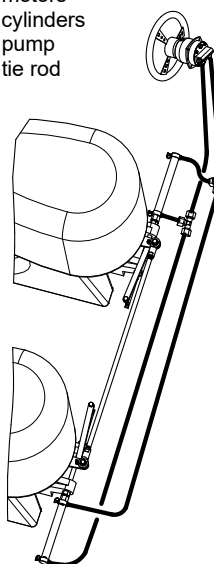
OIL CAN - page 21



- 1 motor
1 cylinder
1 pump



- 2 motors
2 cylinders
1 pump
1 tie rod



- 1 motor
1 cylinder
1 pump

