



## Product Specifications Sheet



## Product Specifications DC Thruster Series

### Declaration of Conformity

We, Sleipner Motor AS hereby Declare that following Side-Power DC thruster products complies with the EC Directives and Standards:

**94/25 Recreational Craft Directive**  
**2006/42 Machinery Safety**  
**89/336 Electromagnetic Compatibility**

|               |                                     |  |
|---------------|-------------------------------------|--|
| SE series     | Side-Power Electric Tunnel Thruster | 30-210kg thrust ON/OFF                       |
| SEP series    | Side-Power Electric Tunnel Thruster | 30-240kg thrust Proportional                 |
| SE-IP series  | Side-Power Electric Tunnel Thruster | 30-170kg thrust ON/OFF-Ignition Protection   |
| SEP-IP series | Side-Power Electric Tunnel Thruster | 30-170kg thrust Proport. Ignition Protection |
| SR series     | Side-Power Retract thruster         | 80/100kg thrust On/Off                       |
| SRP series    | Side-Power Retract thruster         | 80/100kg thrust Proportional                 |
| SRL series    | Side-Power Retract thruster         | 80/100kg thrust On/Off Low Profile           |
| SRLP series   | Side-Power Retract thruster         | 80/100kg thrust Low Profile Proportional     |
| SRV series    | Side-Power Retract thruster         | 80-285kg thrust Vertical On/Off              |
| SRVP series   | Side-Power Retract thruster         | 80-210kg thrust Vertical Proportional        |
| SRVL series   | Side-Power Retract thruster         | 80/100kg thrust Vertical On/Off Low Profile  |
| SP Series     | Side-Power Electric Tunnel Thruster | 240/285kg thrust On/Off                      |
| EB Series     | Side-Power Electric Tunnel Thruster | 20-90kg thrust On/Off Belt                   |
| EX Series     | Side-Power External Thruster        | 25-180kg thrust On/Off                       |
| SX Series     | Side-Power External Thruster        | 80/100kg thrust On/Off External              |
| SXP Series    | Side-Power External Thruster        | 80/100kg thrust Proportional External        |

Leading boat builders all over the world choose Side-Power for performance, reliability, ease of installation and unrivalled safety features.

This commitment to quality and product development has made the Side-Power range of thrusters the benchmark in the industry.

FREDRIKSTAD, 26th of January 2016

Arne K Skauen  
 Managing Director, Sleipner Motor AS



ISO 9001 CERTIFIED COMPANY



Confidence by Control

SIDE-POWER.com

Version 1\_0\_3\_2016



## Product Specifications Sheet



## Specifications and performance data

- Actual performances will vary for each installation depending on many factors.
- Specifications shown here are based on a thruster installed at a depth equal to one tunnel diameter and with DC electric power at thruster as shown.

| SE Series thrusters*            | SE 30/125 S            | SE 40/125 S            | SE 60/185 S                 | SE 80/185 T                  | SE 100/185 T                  | SE 120/215 T             |
|---------------------------------|------------------------|------------------------|-----------------------------|------------------------------|-------------------------------|--------------------------|
| Thrust at 10.5V/21V* (kg • lbs) | 30 • 66                | 40 • 88                | 60 • 132                    | 80 • 176                     | 100 • 220                     | 120 • 264                |
| Thrust at 12V/24V* (kg • lbs)   | 40 • 88                | 48 • 105               | 73 • 161                    | 96 • 212                     | 116 • 256                     | 139 • 306                |
| Typical boat size (ft • m)      | 20' - 28' • 6 - 8.5    | 26' - 34' • 8 - 10.5   | 29' - 39' • 9 - 12          | 35' - 48' • 10 - 15          | 39' - 55' • 12 - 17           | 42' - 60' • 13 - 18      |
| Tunnel I.D. (mm • in)           | 125 • 4.92"            | 125 • 4.92"            | 185 • 7.3"                  | 185 • 7.3"                   | 185 • 7.3"                    | 215 • 8.46"              |
| Propulsion system               | Single                 | Single                 | Single                      | Twin                         | Twin                          | Twin                     |
| Power at 10.5V/21V* (kw • Hp)   | 1.5 • 2                | 2.2 • 3                | 3.1 • 4                     | 4.4 • 6                      | 6.3 • 8.4                     | 6.4 • 8.55               |
| For DC system (V)               | 12                     | 12                     | 12/24                       | 12/24                        | 12/24                         | 24                       |
| Weight (kg • lbs)               | 9.5 • 21               | 10 • 22                | 16 • 35                     | 20 • 44                      | 31 • 68                       | 34 • 74                  |
| Rec. CCA (DIN** 12/24V)         | 200                    | 300                    | 350 • 175                   | 550/300                      | 750/400                       | - / 400                  |
| <b>Item Code 12V</b>            | <b>SE30/125S(-IP)</b>  | <b>SE40/125S(-IP)</b>  | <b>SE60/185S-12V(-12IP)</b> | <b>SE80/185T-12V(-12IP)</b>  | <b>SE100/185T-12V(-12IP)</b>  |                          |
| <b>Item Code 24V</b>            |                        |                        | <b>SE60/185S-24V(-24IP)</b> | <b>SE80/185T-24V(-24IP)</b>  | <b>SE100/185T-24V(-24IP)</b>  | <b>SE120/215T (-IP)</b>  |
| <b>Item Code 12V PRO*</b>       | <b>SEP30/125S(-IP)</b> | <b>SEP40/125S(-IP)</b> | <b>SEP60/185S-12V (IP)</b>  | <b>SEP80/185T-12V(-12IP)</b> | <b>SEP100/185T-12V(-12IP)</b> |                          |
| <b>Item Code 24V PRO*</b>       |                        |                        | <b>SEP60/185S-24V (IP)</b>  | <b>SEP80/185T-24V(-24IP)</b> | <b>SEP100/185T-24V(-24IP)</b> | <b>SEP120/215T (-IP)</b> |



| SE 130/250 T                  | SE 150/215 T        | SE 170/250 TC            | SE 210/250 TC       | SP 240 TCi          | SP 285 TCi          |
|-------------------------------|---------------------|--------------------------|---------------------|---------------------|---------------------|
| 130 • 284                     | 150 • 330           | 170 • 374                | 210 • 462           | 240 • 528           | 285 • 627           |
| 160 • 352                     | 182 • 400           | 210 • 462                | 250 • 550           | 300 • 660           | 340 • 748           |
| 42' - 62' • 13 - 19           | 44' - 65' • 14 - 20 | 50' - 72' • 15 - 22      | 55' - 78' • 17 - 24 | 60' - 82' • 18 - 25 | 72' - 98' • 22 - 30 |
| 250 • 9.8"                    | 215 • 8.46"         | 250 • 9.8"               | 250 • 9.8"          | 300 • 11.8"         | 300 • 11.8"         |
| Twin                          | Twin                | Twin Counter rot.        | Twin Counter rot.   | Twin Counter rot.   | Twin Counter rot.   |
| 6.5 • 8.7                     | 8.8 • 11.8          | 8 • 10.7                 | 10 • 13.15          | 11.4 • 15.5         | 15 • 20             |
| 12/24                         | 24                  | 24                       | 24                  | 24                  | 24 (48V motor)      |
| 37 • 77                       | 38 • 79             | 44 • 97                  | 68 • 150            | 70 • 154            | 73 • 160            |
| 750/400                       | - / 560             | - / 550                  | - / 650             | - / 700             | - / 2x450 - 24V     |
| <b>SE130/250T-12V(-12IP)</b>  |                     |                          |                     |                     |                     |
| <b>SE130/250T-24V(-24IP)</b>  | <b>SE150/215T</b>   | <b>SE170/250TC(-IP)</b>  | <b>SE210/250TC</b>  | <b>SP240TCi</b>     | <b>SP285TCi</b>     |
| <b>SEP130/250T-12V(-12IP)</b> |                     |                          |                     |                     |                     |
| <b>SEP130/250T-24V(-24IP)</b> | <b>SEP150/215T</b>  | <b>SEP170/250TC(-IP)</b> | <b>SEP210/250TC</b> | <b>SEP240TCi</b>    |                     |



| EB Series thrusters*            | EBS 20/110 S      | EB 40/160 S         | EB 60/160 S          | EB 75/185 S          | EB 90/185 S          |
|---------------------------------|-------------------|---------------------|----------------------|----------------------|----------------------|
| Thrust at 10.5V/21V* (kg • lbs) | 20 • 44           | 40 • 88             | 60 • 132             | 75 • 165             | 90 • 198             |
| Thrust at 12V/24V* (kg • lbs)   |                   |                     |                      |                      |                      |
| Typical boat size (ft • m)      | up to 23' • 7     | 23' - 29' • 7 - 8.8 | 29' - 38' • 9 - 12   | 32' - 45' • 9,7 - 14 | 39' - 50' • 12 - 17  |
| Tunnel I.D. (mm • in)           | 110 • 4.33"       | 160 • 6,3"          | 160 • 6,3"           | 185 • 7.3"           | 185 • 7.3"           |
| Propulsion system               | Single            | Single              | Single               | Single               | Single               |
| Power at 10.5V/21V* (kw • Hp)   | 1.6 • 2.2         | 2.0 • 2.7           | 5,0 • 6.8            | 6,0 • 8.1            | 6,5 • 8.8            |
| For DC system (V)               | 12                | 12                  | 12/24                | 12/24                | 12/24                |
| Weight (kg • lbs)               | 5 • 11            | 13 • 28,5           | 15 • 33              | 17 • 37,5            | 17 • 37,5            |
| Rec. CCA (DIN** 12/24V)         | 200               | 250                 | 630/ 315             | 750/375              | 820/410              |
| <b>Item Code 12V</b>            | <b>EBS20/110S</b> | <b>EB40/160S</b>    | <b>EB60/160S-12V</b> | <b>EB75/185S-12V</b> | <b>EB90/185S-12V</b> |
| <b>Item Code 24V</b>            |                   |                     | <b>EB60/160S-24V</b> | <b>EB75/185S-24V</b> | <b>EB90/185S-24V</b> |





## Product Specifications Sheet



### SR Series thrusters\*

|                                 | SR 80/185 T         | SR 100/185 T        | SRL 80/185 T        | SRL 100/185 T       | SRV 80/185 T        |
|---------------------------------|---------------------|---------------------|---------------------|---------------------|---------------------|
| Thrust at 10.5V/21V* (kg • lbs) | 80 • 176            | 100 • 220           | 80 • 176            | 100 • 220           | 80 • 176            |
| Thrust at 12V/24V* (kg • lbs)   | 96 • 212            | 96 • 212            | 96 • 212            | 96 • 212            | 96 • 212            |
| Typical boat size (ft • m)      | 35' - 48' • 10 - 15 | 35' - 55' • 12 - 17 | 35' - 48' • 10 - 15 | 35' - 55' • 12 - 17 | 35' - 48' • 10 - 15 |
| Tunnel I.D. (mm • in)           | 185 • 7.3"          | 185 • 7.3"          | 185 • 7.3"          | 185 • 7.3"          | 185 • 7.3"          |
| Propulsion system               | Twin                | Twin                | Twin                | Twin                | Twin                |
| Power at 10.5V/21V* (kw • Hp)   | 4.4 • 6             | 6.3 • 8.4           | 4.4 • 6             | 6.3 • 8.4           | 4.4 • 6             |
| For DC system (V)               | 12/24               | 12/24               | 12/24               | 12/24               | 12/24               |
| Weight (kg • lbs)               | 31 • 68             | 44 • 97             | 31 • 68             | 44 • 97             | 31 • 68             |
| Rec. CCA (DIN** 12/24V)         | 550/300             | 750/400             | 550/300             | 750/400             | 550/300             |
| Installation                    | mould-in            | mould-in            | flange              | flange              | flange              |

|                    |                |                 |                 |                  |                 |
|--------------------|----------------|-----------------|-----------------|------------------|-----------------|
| Item Code 12V      | SR80/185T-12V  | SR100/185T-12V  | SRL80/185T-12V  | SRL100/185T-12V  | SRV80/185T-12V  |
| Item Code 24V      | SR80/185T-24V  | SR100/185T-24V  | SRL80/185T-24V  | SRL100/185T-24V  | SRV80/185T-24V  |
| Item Code 12V PRO* | SRP80/185T-12V | SRP100/185T-12V | SRLP80/185T-12V | SRLP100/185T-12V | SRVP80/185T-12V |
| Item Code 24V PRO* | SRP80/185T-24V | SRP100/185T-24V | SRLP80/185T-24V | SRLP100/185T-24V | SRVP80/185T-24V |



| SRV 100/185 T       | SRV 130/250 T       | SRV 170/250 TC      | SRV 210/250 TC      | SRV 285/300 TC      |
|---------------------|---------------------|---------------------|---------------------|---------------------|
| 100 • 220           | 130 • 284           | 170 • 374           | 210 • 462           | 285 • 627           |
| 116 • 256           | 160 • 352           | 210 • 462           | 250 • 550           | 340 • 748           |
| 35' - 55' • 12 - 17 | 42' - 62' • 13 - 19 | 50' - 70' • 15 - 22 | 55' - 78' • 17 - 24 | 72' - 98' • 22 - 30 |
| 185 • 7.3"          | 250 • 9.8"          | 250 • 9.8"          | 250 • 9.8"          | 300 • 11.8"         |
| Twin                | Twin                | Twin Counter rot.   | Twin Counter rot.   | Twin Counter rot.   |
| 6.3 • 8.4           | 6.5 • 8.7           | 8 • 10.7            | 11 • 14.5           | 15 • 20             |
| 12/24               | 12/24               | 24                  | 24                  | 24 (48V motor)      |
| 44 • 97             | 82 • 181            | 88 • 194            | 112 • 247           | 117 • 258           |
| 750/400             | 750/400             | 550                 | 650                 | - / 2x450 - 24V     |
| flange              | flange              | flange              | flange              | flange              |

|                  |                  |                   |                   |                 |
|------------------|------------------|-------------------|-------------------|-----------------|
| SRV100/185T-12V  | SRV130/250T-12V  |                   |                   |                 |
| SRV100/185T-24V  | SRV130/250T-24V  | SRV170/250TC-24V  | SRV210/250TC-24V  | SRV285/300TC-48 |
| SRVP100/185T-12V | SRVP130/250T-12V |                   |                   |                 |
| SRVP100/185T-24V | SRVP130/250T-24V | SRVL170/250TC-24V | SRVP210/250TC-24V |                 |

### EX Series thrusters

|                                 | EX 35 S             | EX 55 S              | EX 75 S            | EX 95 S             | EX 110 D            | EX 180 D            |
|---------------------------------|---------------------|----------------------|--------------------|---------------------|---------------------|---------------------|
| Thrust at 11.5V/23V* (kg • lbs) | 25 • 55             | 40 • 88              | 53 • 117           | 67 • 148            | 80 • 176            | 130 • 264           |
| Performance thrust* (kg • lbs)  | 35 • 77             | 55 • 121             | 74 • 163           | 95 • 210            | 110 • 243           | 180 • 397           |
| Typical boat size (ft • m)      | 20' - 28' • 6 - 8.5 | 26' - 34' • 8 - 10.5 | 29' - 38' • 9 - 12 | 35' - 48' • 10 - 15 | 35' - 53' • 12 - 16 | 44' - 59' • 14 - 18 |
| Tunnel I.D. (mm • in)           | 150 • 5.9"          | 150 • 5.9"           | 150 • 5.9"         | 150 • 5.9"          | 150 • 5.9"          | 150 • 5.9"          |
| Propulsion system               | Single              | Single               | Single             | Single              | Dual                | Dual                |
| Power at 11.5V/23V* (kw • Hp)   | 1.3 • 1.75          | 1.8 • 2.4            | 2.3 • 3.1          | 3.0 • 4.0           | 4.0 • 5.4           | 6.0 • 8.0           |
| For DC system (V)               | 12                  | 12                   | 24                 | 24                  | 12                  | 24                  |
| Weight (kg • lbs)               | 19,5 • 43           | 19,5 • 43            | 19,5 • 43          | 19,5 • 43           | 35 • 77             | 35 • 77             |
| Rec. CCA (DIN** 11.5/23V)       | 170                 | 225                  | 150                | 190                 | 250                 | 375                 |

|               |       |       |       |       |        |        |
|---------------|-------|-------|-------|-------|--------|--------|
| Item Code 12V | EX35S | EX55S |       |       |        |        |
| Item Code 24V |       |       | EX75S | EX95S | EX110D | EX180D |



| EX 25 C           | EX 40 C                | EX 55 C              | EX 70 C              |
|-------------------|------------------------|----------------------|----------------------|
| 25 • 55           | 40 • 88                | 53 • 117             | 67 • 148             |
| -                 | -                      | -                    | -                    |
| 18' - 26' • 5 - 8 | 24' - 34' • 7,5 - 10,5 | 28' - 36' • 8,5 - 11 | 32' - 42' • 9,5 - 13 |
| 150 • 5.9"        | 150 • 5.9"             | 150 • 5.9"           | 150 • 5.9"           |
| Single            | Single                 | Single               | Single               |
| 1.3 • 1.75        | 1.8 • 2.4              | 2.3 • 3.1            | 3,0 • 4.0            |
| 12                | 12                     | 24                   | 24                   |
| 12 • 26,5         | 12 • 26,5              | 12 • 26,5            | 12 • 26,5            |
| 170               | 225                    | 150                  | 190                  |

|       |       |       |       |
|-------|-------|-------|-------|
| EX25C | EX40C |       |       |
|       |       | EX55C | EX70C |



## Product Specifications Sheet



| SX Series thrusters             | SX 80/185 T           | SX 100/185 T           |
|---------------------------------|-----------------------|------------------------|
| Thrust at 10.5V/21V* (kg • lbs) | 80 • 176              | 100 • 220              |
| Thrust at 12V/24V* (kg • lbs)   | 96 • 212              | 116 • 256              |
| Typical boat size (ft • m)      | 35' - 48' • 10 - 15   | 35' - 55' • 12 - 17    |
| Tunnel I.D. (mm • in)           | 185 • 7.3"            | 185 • 7.3"             |
| Propulsion system               | Twin                  | Twin                   |
| Power at 10.5V/21V* (kw • Hp)   | 4.4 • 6               | 6.3 • 8.4              |
| For DC system (V)               | 12/24                 | 12/24                  |
| Weight (kg • lbs)               | 52 • 115              | 57 • 125               |
| Rec. CCA (DIN** 12/24V)         | 550/300               | 750/400                |
| <b>Item Code 12V</b>            | <b>SX80/185T-12V</b>  | <b>SX100/185T-12V</b>  |
| <b>Item Code 24V</b>            | <b>SX80/185T-24V</b>  | <b>SX100/185T-24V</b>  |
| <b>Item Code 12V PRO*</b>       | <b>SXP80/185T-12V</b> | <b>SXP100/185T-12V</b> |
| <b>Item Code 24V PRO*</b>       | <b>SXP80/185T-24V</b> | <b>SXP100/185T-24V</b> |

## Product features

- For more information regarding each feature go to our website and read more, or contact your Side-Power representative.





## Product Specifications Sheet



### Battery and cable recommendations

#### SE, SEP, IP, SR, SRV, SRL, SX - series

- All cable lengths are the total of both - and + cables.
- Battery size is stated as minimum cold crank capacity, not Ah.
- Use slow fuse rated to hold stated Amp-Draw for min. 5 minutes.

Minimum and recommended cable dimensions can be identical due to safety margins and cable heat considerations for short cable lengths.

\* Minimum or recommended cable cross section in mm<sup>2</sup>

| Model      | Voltage     | Nominal current draw | Min. battery CCA | Rec. fuse |     | <7m total + & - |      | 7-14m total + & - |        | 15-21m total + & - |        | 22-28m total + & - |          | 28-35m total + & - |          | 36-45m total + & - |          |
|------------|-------------|----------------------|------------------|-----------|-----|-----------------|------|-------------------|--------|--------------------|--------|--------------------|----------|--------------------|----------|--------------------|----------|
|            |             |                      |                  |           |     | Min.            | Rec. | Min.              | Rec.   | Min.               | Rec.   | Min.               | Rec.     | Min.               | Rec.     | Min.               | Rec.     |
|            |             |                      |                  |           |     | mm2             | AWG  | mm2               | AWG    | mm2                | AWG    | mm2                | AWG      | mm2                | AWG      | mm2                | AWG      |
| SE30/125S  | 12 V        | 225 A                | DIN: 200         | ANL       | mm2 | 35              | 50   | 50                | 70     | 70                 | 95     | 95                 | 120      | 120                | 2x70     | 2x70               | 2x95     |
|            |             |                      | SAE:380          | 150       | AWG | 1               | 1/0  | 1/0               | 2/0    | 2/0                | 3/0    | 3/0                | 4/0      | 4/0                | 2x 2/0   | 2x2/0              | 2x 3/0   |
| SE40/125S  | 12 V        | 315 A                | DIN: 300         | ANL       | mm2 | 35              | 50   | 70                | 95     | 95                 | 120    | 120                | 2x95     | 2x95               | 2x120    | 2x120              | 260*     |
|            |             |                      | SAE: 570         | 250       | AWG | 1               | 1/0  | 2/0               | 3/0    | 3/0                | 4/0    | 4/0                | 2x 3/0   | 2x 3/0             | 2x 4/0   | 2x 4/0             |          |
| SE60/185S  | 12 V        | 370 A                | DIN: 350         | ANL       | mm2 | 50              | 50   | 70                | 95     | 120                | 2x 70  | 2x70               | 2x95     | 2x 95              | 2x120    | 2x120              | 280*     |
|            |             |                      | SAE:665          | 250       | AWG | 1               | 1/0  | 2/0               | 3/0    | 4/0                | 2x 2/0 | 2x2/0              | 2x 3/0   | 2x 3/0             | 2x 4/0   | 2x 4/0             |          |
|            | 24 V        | 170 A                | DIN: 175         | ANL       | mm2 | 25              | 35   | 25                | 35     | 25                 | 35     | 35                 | 50       | 50                 | 60       | 60                 | 70       |
|            |             |                      | SAE: 332         | 150       | AWG | 1               | 1    | 1                 | 1      | 1                  | 1      | 1                  | 1/0      | 1/0                | 2/0      | 2/0                | 2/0      |
| SE80/185T  | 12 V        | 530 A                | DIN: 550         | ANL       | mm2 | 70              | 70   | 120               | 2x 70  | 2x 70              | 2x 95  | 2x 95              | 2x120    | 2x 120             | 340*     | NA                 | NA       |
|            |             |                      | SAE:1045         | 400       | AWG | 2/0             | 2/0  | 3/0               | 2x 2/0 | 2x 2/0             | 2x 2/0 | 2x 3/0             | 2x120    | 2x 4/0             |          |                    |          |
|            | 24 V        | 260 A                | DIN: 300         | ANL       | mm2 | 35              | 35   | 35                | 50     | 70                 | 70     | 70                 | 95       | 95                 | 120      | 120                | 2x 95    |
|            |             |                      | SAE: 570         | 250       | AWG | 1               | 1    | 1                 | 1/0    | 2/0                | 2/0    | 2/0                | 3/0      | 3/0                | 4/0      | 4/0                | 2x 3/0   |
| SE100/185T | 12 V        | 740 A                | DIN: 750         | ANL       | mm2 | 95              | 95   | 2x 70             | 2x 95  | 2x 95              |        |                    |          |                    |          |                    |          |
|            |             |                      | SAE: 1425        | 500       | AWG | 3/0             | 3/0  | 2x 2/0            | 2x 3/0 | 2x 3/0             | 280*   | 250*               | 375*     | NA                 | NA       | NA                 | NA       |
|            | 24 V        | 340 A                | DIN: 400         | ANL       | mm2 | 50              | 50   | 50                | 70     | 70                 | 95     | 95                 | 120      | 120                | 2x 95    | 2x95               | 2x 120   |
|            |             |                      | SAE: 760         | 325       | AWG | 1               | 1/0  | 1/0               | 2/0    | 2/0                | 3/0    | 3/0                | 4/0      | 4/0                | 2x 3/0   | 2x 3/0             | 2x 4/0   |
| SE120/215T | 24V         | 420 A                | DIN: 450         | ANL       | mm2 | 70              | -    | 50                | -      | 70                 | -      | 95                 | -        | 120                | -        | 150                | -        |
|            |             |                      | SAE: 855         | 325       | AWG | 1/0             | -    | 0                 | -      | 2/0                | -      | 3/0                | -        | 4/0                | -        | 2x2/0              | -        |
| SE130/250T | 12V         | 800 A                | DIN: 400         | ANL       | mm2 | 95              | -    | 2x70              | -      | 2x95               | -      | 250*               | 375*     | -                  | -        | -                  | -        |
|            |             |                      | SAE: 760         | 500       | AWG | 3/0             | -    | 2x2/0             | -      | 2x3/0              | -      |                    |          |                    |          |                    |          |
|            | 24V         | 340 A                | DIN: 400         | ANL       | mm2 | 35              | -    | 50                | -      | 70                 | -      | 95                 | -        | 120                | -        | 2x95               | -        |
|            |             |                      | SAE: 760         | 325       | AWG | 1               | -    | 1/0               | -      | 2/0                | -      | 3/0                | -        | 4/0                | -        | 2x3/0              | -        |
| SE150/215T | 24V         | 610 A                | DIN: 500         | ANL       | mm2 | 70              | -    | 95                | -      | 120                | -      | 2x95               | -        | 2x95               | -        | 2x95               | -        |
|            |             |                      | SAE: 900         | 500       | AWG | 2/0             | -    | 3/0               | -      | 4/0                | -      | 2x3/0              | -        | 2x3/0              | -        | 2x4/0              | -        |
| SE 170/250 | 24V         | 550 A                | DIN: 500         | ANL       | mm2 | 70              | -    | 95                | -      | 120                | -      | 2x70               | -        | 2x95               | -        | 2x120              | -        |
|            |             |                      | SAE: 950         | 400       | AWG | 0               | -    | 3/0               | -      | 4/0                | -      | 2x2/0              | -        | 2x3/0              | -        | 2x4/0              | -        |
| SE 210/250 | 24V         | 500 A                | DIN: 700         | ANL       | mm2 | 70              | -    | 95                | -      | 120                | -      | 2x70               | -        | 2x95               | -        | 2x120              | -        |
|            |             |                      | SAE: 1330        | 400-500   | AWG | 2/0             | -    | 3/0               | -      | 4/0                | -      | 2x2/0              | -        | 2x3/0              | -        | 2x4/0              | -        |
| SP 240/300 | 24V         | 610-670A             | DIN: 700         | ANL       | mm2 | 70              | -    | 95                | -      | 120                | -      | 190                | (350CCA) | 2x95               | (400CCA) | 2x120              | (400CCA) |
|            |             |                      | SAE: 1330        | 500       | AWG | 2/0             | -    | 3/0               | -      | 4/0                | -      | 2x3/0              | (665CCA) | 2x3/0              | (760CCA) | 2x4/0              | (760CCA) |
| SP 285/300 | 24*2<br>48V | 400-430A (48V)       | DIN: 400         | ANL       | mm2 | 50              | -    | 70                | -      | 95                 | -      | 95                 | -        | 103                | -        | 140                | -        |
|            |             |                      | SAE: 760         | 325       | AWG | 1               | -    | 2/0               | -      | 3/0                | -      | 3/0                | -        | 0                  | -        | 2x00               | -        |





## Product Specifications Sheet



### Battery and cable recommendations EB-series and EX-series

- All cable lengths are the total of both - and + cables.
- Battery size is stated as minimum cold crank capacity, not Ah.
- Use slow fuse rated to hold stated Amp-Draw for min. 5 minutes.

Minimum and recommended cable dimensions can be identical due to safety margins and cable heat considerations for short cable lengths.

\* Minimum or recommended cable cross section in mm<sup>2</sup>

| Model | Voltage | Nominal current draw | Min. battery CCA    | Rec. Fuse |            | >5m total + & - |      | 1-10m total + & - |      | 10-20m total + & - |      |
|-------|---------|----------------------|---------------------|-----------|------------|-----------------|------|-------------------|------|--------------------|------|
|       |         |                      |                     |           |            | Min.            | Rec. | Min.              | Rec. | Min.               | Rec. |
| EBS20 | 12 V    | 60 A                 | DIN: 200<br>SAE:380 | 150       | mm2<br>AWG | 50              | -    | -                 | -    | -                  | -    |
|       |         |                      |                     |           |            | 1/0             | -    | -                 | -    | -                  | -    |
| EB40  | 12 V    | 115 A                | DIN: 300<br>SAE:570 | 250       | mm2<br>AWG | 50              | -    | 70                | -    | -                  | -    |
| EB60  | 12 V    | 115 A                | DIN: 350<br>SAE:665 | 400       | mm2<br>AWG | -               | -    | 95                | -    | 120                | -    |
|       |         |                      |                     |           |            | -               | -    | 3/0               | -    | 4/0                | -    |
| EB75  | 24 V    | 115 A                | DIN: 175<br>SAE:380 | 325       | mm2<br>AWG | -               | -    | 95                | -    | 95                 | -    |
|       |         |                      |                     |           |            | -               | -    | 3/0               | -    | 3/0                | -    |
| EB90  | 12 V    | 115 A                | DIN: 500<br>SAE:950 | 400       | mm2<br>AWG | -               | -    | 95                | -    | 120                | -    |
|       |         |                      |                     |           |            | -               | -    | 3/0               | -    | 4/0                | -    |
| EB90  | 24V     | 150 A                | DIN: 250<br>SAE:475 | 325       | mm2<br>AWG | -               | -    | 95                | -    | 95                 | -    |
|       |         |                      |                     |           |            | -               | -    | 3/0               | -    | 3/0                | -    |

| Model  | Voltage | Nominal current draw | Min. battery CCA    | Rec. Fuse |            | >8m total + & - |      | 8-16m total + & - |      |
|--------|---------|----------------------|---------------------|-----------|------------|-----------------|------|-------------------|------|
|        |         |                      |                     |           |            | Min.            | Rec. | Min.              | Rec. |
| EX35S  | 12 V    | 140 A                | DIN: n/a<br>SAE:550 | 100       | mm2<br>AWG | 35              | -    | 70                | -    |
| EX25C  |         |                      |                     |           |            | -               | 2/0  | -                 |      |
| EX55S  | 12 V    | 187 A                | DIN: n/a<br>SAE:550 | 125       | mm2<br>AWG | 50              | -    | 70                | -    |
| EX40C  |         |                      |                     |           |            | 1/0             | -    | 2/0               | -    |
| EX75S  | 24 V    | 120 A                | DIN: n/a<br>SAE:550 | 80        | mm2<br>AWG | 25              | -    | 50                | -    |
| EX55C  |         |                      |                     |           |            | -               | 1/0  | -                 |      |
| EX95S  | 24V     | 175 A                | DIN: n/a<br>SAE:550 | 100       | mm2<br>AWG | 50              | -    | 70                | -    |
| EX70C  |         |                      |                     |           |            | 1/0             | -    | 2/0               | -    |
| EX110D | 12 V    | 2x187 A              | DIN: n/a<br>SAE:550 | 2x125     | mm2<br>AWG | 50              | -    | 70                | -    |
| EX180D | 24V     | 2x175 A              | DIN: n/a<br>SAE:551 | 2x125     | mm3<br>AWG | 50              | -    | 70                | -    |
|        |         |                      |                     |           |            | 1/0             | -    | 2/0               | -    |

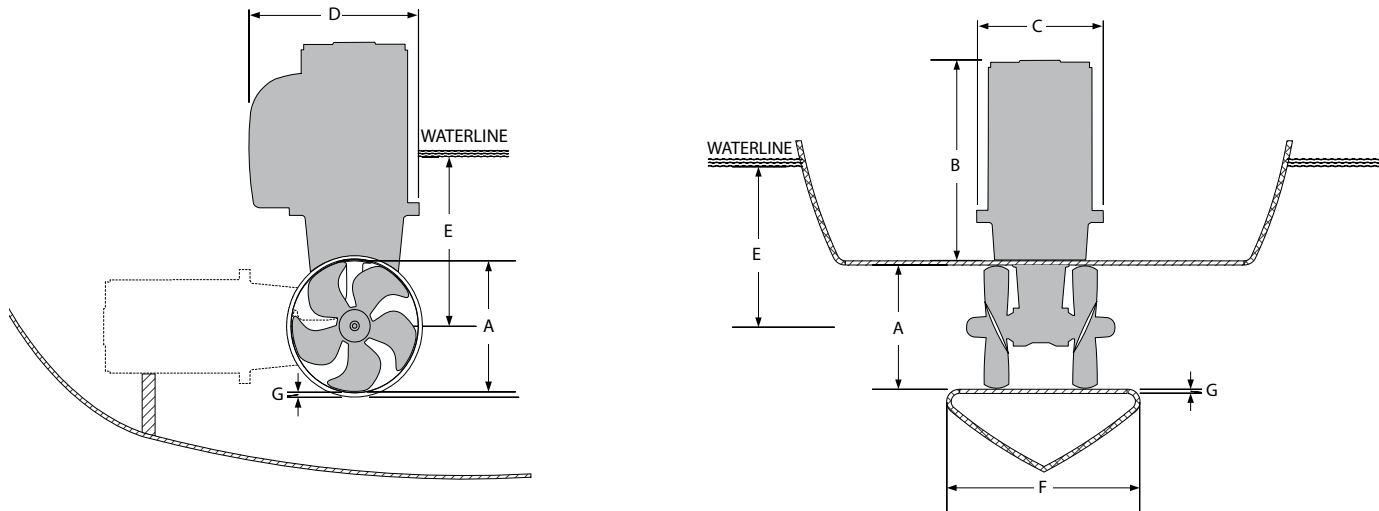




## Product Specifications Sheet

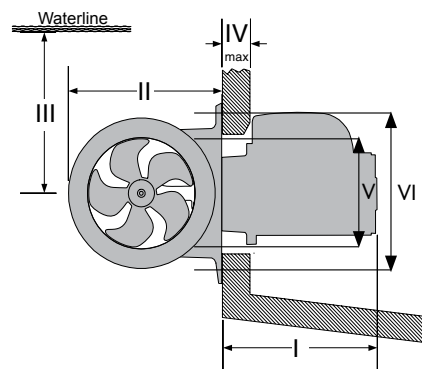


## Measurements SE Series



| Thruster<br>(mm • in) | A           | B          | C          | D          | E <sub>min</sub> | F          | F <sub>recommended</sub> | G <sub>min</sub> | G <sub>max</sub> |
|-----------------------|-------------|------------|------------|------------|------------------|------------|--------------------------|------------------|------------------|
| SE30/125S             | 125 • 4.92  | 245 • 9.65 | 190 • 7.5  | 180 • 7.1  | 125 • 4.9        | 92 • 3.6   | 184 • 7.25               | 4 • 0.16         | 5 • 0.20         |
| SE40/125S             | 125 • 4.92  | 245 • 9.65 | 190 • 7.5  | 180 • 7.1  | 125 • 4.9        | 92 • 3.6   | 184 • 7.25               | 4 • 0.16         | 5 • 0.20         |
| SE60/185S             | 185 • 7.3   | 268 • 10.5 | 208 • 8.2  | 197 • 7.8  | 150 • 5.9        | 117 • 4.6  | 234 • 9.2                | 4 • 0.16         | 6 • 0.24         |
| SE80/185S             | 185 • 7.3   | 361 • 14.2 | 208 • 8.2  | 200 • 7.9  | 200 • 7.9        | 170 • 6.7  | 340 • 13.4               | 6 • 0.24         | 8 • 0.31         |
| SE100/185T            | 185 • 7.3   | 396 • 15.6 | 245 • 9.6  | 245 • 9.6  | 200 • 7.9        | 170 • 6.7  | 340 • 13.4               | 6 • 0.24         | 8 • 0.31         |
| SE120/215T            | 215 • 8.46  | 389 • 15.3 | 245 • 9.6  | 250 • 9.8  | 215 • 8.5        | 280 • 11.0 | 560 • 22.0               | 6 • 0.24         | 8 • 0.31         |
| SE130/250T            | 250 • 9.84  | 398 • 15.7 | 254 • 10.0 | 256 • 10.1 | 230 • 9.0        | 280 • 11.0 | 560 • 22.0               | 7 • 0.28         | 10 • 0.39        |
| SE150/215T            | 215 • 8.46  | 398 • 15.7 | 254 • 10.0 | 260 • 10.2 | 230 • 9.0        | 280 • 11.0 | 560 • 22.0               | 7 • 0.28         | 10 • 0.39        |
| SE170/250TC           | 250 • 9.84  | 421 • 16.6 | 230 • 9.1  | 256 • 10.1 | 250 • 9.8        | 300 • 11.8 | 600 • 23.6               | 7 • 0.28         | 10 • 0.39        |
| SE210/250TC           | 250 • 9.84  | 478 • 18.8 | 260 • 10.2 | 281 • 7.5  | 250 • 9.8        | 300 • 11.8 | 600 • 23.6               | 7 • 0.28         | 13 • 0.51        |
| SP240TCi              | 300 • 11.81 | 503 • 19.8 | 266 • 10.5 | 296 • 11.7 | 300 • 11.8       | 300 • 11.8 | 600 • 23.6               | 10 • 0.39        | 13 • 0.51        |
| SP285TCi              | 300 • 11.81 | 455 • 17.9 | 270 • 10.6 | 310 • 12.2 | 300 • 11.8       | 300 • 11.8 | 600 • 23.6               | 10 • 0.39        | 13 • 0.51        |

| Stern thruster<br>(mm • in) | I           | II         | III <sub>min</sub> | IV <sub>max</sub> | V          | VI         | Tunnel Length |
|-----------------------------|-------------|------------|--------------------|-------------------|------------|------------|---------------|
| SE30/125S                   | 207 • 8.15  | 190 • 7.48 | 135 • 5.31         | 14 • 0.55         | 160 • 6.3  | 217 • 8.5  | 197 • 7.76    |
| SE40/125S                   | 207 • 8.15  | 190 • 7.48 | 135 • 5.31         | 14 • 0.55         | 160 • 6.3  | 217 • 8.5  | 197 • 7.76    |
| SE60/185S                   | 228 • 8.97  | 256 • 10.1 | 150 • 5.91         | 35 • 1.38         | 200 • 7.8  | 300 • 11.8 | 337 • 13.27   |
| SE80/185S                   | 321 • 13.7  | 256 • 10.1 | 200 • 7.87         | 54 • 2.13         | 200 • 7.8  | 300 • 11.8 | 337 • 13.27   |
| SE100/185T                  | 356 • 14.0  | 256 • 10.1 | 200 • 7.87         | 54 • 2.13         | 200 • 7.8  | 300 • 11.8 | 337 • 13.27   |
| SE120/215T                  | 349 • 4.92  | 300 • 11.8 | 215 • 8.46         | 54 • 2.13         | 200 • 7.8  | 300 • 11.8 | 330 • 13.0    |
| SE130/250T                  | 359 • 14.13 | 340 • 13.4 | 250 • 9.84         | 60 • 2.36         | 200 • 7.8  | 350 • 11.8 | 350 • 13.87   |
| SE150/215T                  | 359 • 14.13 | 300 • 11.8 | 215 • 8.46         | 54 • 2.13         | 200 • 7.8  | 350 • 13.8 | 330 • 13.0    |
| SE170/250TC                 | 382 • 15.04 | 340 • 13.4 | 250 • 9.84         | 60 • 2.36         | 200 • 7.8  | 350 • 13.8 | 350 • 13.87   |
| SE210/250TC                 | 420 • 46.54 | 360 • 14.2 | 300 • 11.81        | 50 • 1.97         | 200 • 7.8  | 350 • 13.8 | 350 • 13.87   |
| SP240TCi                    | 454 • 17.9  | 420 • 16.5 | 300 • 11.81        | 60 • 2.36         | 258 • 10.2 | 396 • 15.6 | 456 • 17.95   |
| SP285TCi                    | 406 • 15.98 | 420 • 16.5 | 300 • 11.81        | 60 • 2.36         | 258 • 10.2 | 396 • 15.6 | 456 • 17.95   |

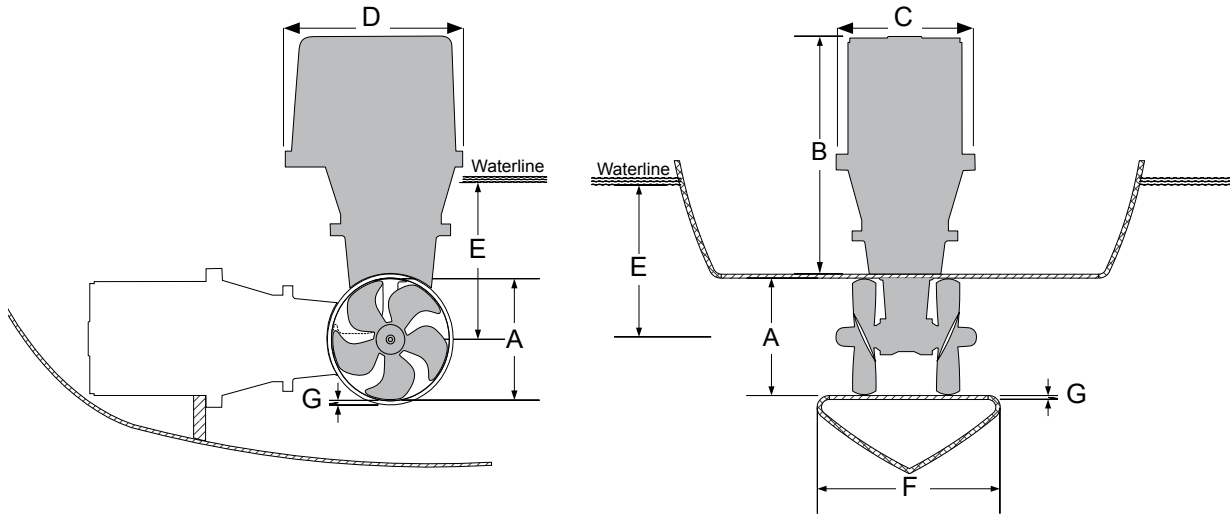




## Product Specifications Sheet

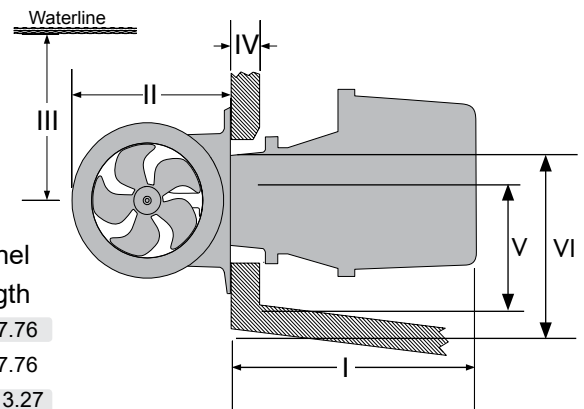


### Measurements SE IP Series



| Thruster<br>(mm • in) | A          | B          | C          | D          | E <sub>min</sub> | F          | F <sub>recommended</sub> | G <sub>min</sub> | G <sub>max</sub> |
|-----------------------|------------|------------|------------|------------|------------------|------------|--------------------------|------------------|------------------|
| SE30/125S IP          | 125 • 4.92 | 245 • 9.6  | 226 • 8.9  | 230 • 9.1  | 125 • 4.92       | 92 • 3.6   | 184 • 7.25               | 4 • 0.16         | 5 • 0.20         |
| SE40/125S IP          | 125 • 4.92 | 245 • 9.6  | 226 • 8.9  | 230 • 9.1  | 125 • 4.92       | 92 • 3.6   | 184 • 7.25               | 4 • 0.16         | 5 • 0.20         |
| SE60/185S IP          | 185 • 7.3  | 270 • 10.6 | 230 • 9.1  | 272 • 10.7 | 150 • 5.91       | 117 • 4.6  | 234 • 9.2                | 4 • 0.16         | 6 • 0.24         |
| SE80/185S IP          | 185 • 7.3  | 376 • 14.8 | 262 • 10.3 | 327 • 12.9 | 200 • 7.87       | 170 • 6.7  | 340 • 13.4               | 6 • 0.24         | 8 • 0.31         |
| SE100/185T IP         | 185 • 7.3  | 451 • 17.8 | 308 • 12.1 | 382 • 15.0 | 200 • 7.87       | 170 • 6.7  | 340 • 13.4               | 6 • 0.24         | 8 • 0.31         |
| SE120/215T IP         | 215 • 8.46 | 451 • 17.8 | 308 • 12.1 | 382 • 15.0 | 215 • 8.46       | 280 • 11   | 560 • 22.0               | 6 • 0.24         | 8 • 0.31         |
| SE130/250T IP         | 250 • 9.84 | 451 • 17.8 | 308 • 12.1 | 382 • 15.0 | 230 • 9.00       | 280 • 11   | 560 • 22.0               | 7 • 0.28         | 10 • 0.39        |
| SE170/250TC IP        | 250 • 9.84 | 451 • 17.8 | 308 • 12.1 | 382 • 15.0 | 250 • 9.84       | 300 • 11.8 | 600 • 23.6               | 7 • 0.28         | 10 • 0.39        |

| Stern thruster<br>(mm • in) | I           | II         | III <sub>min</sub> | IV <sub>max</sub> | V         | VI         | Tunnel Length |
|-----------------------------|-------------|------------|--------------------|-------------------|-----------|------------|---------------|
| SE30/125S IP                | 226 • 8.89  | 190 • 7.48 | 135 • 5.1          | 14 • 0.55         | 160 • 6.3 | 217 • 8.5  | 197 • 7.76    |
| SE40/125S IP                | 226 • 8.89  | 190 • 7.48 | 135 • 5.31         | 14 • 0.55         | 160 • 6.3 | 217 • 8.5  | 197 • 7.76    |
| SE60/185S IP                | 235 • 10.43 | 256 • 10.1 | 150 • 5.91         | 35 • 1.38         | 200 • 7.8 | 300 • 11.8 | 337 • 13.27   |
| SE80/185S IP                | 399 • 15.70 | 256 • 10.1 | 200 • 7.87         | 54 • 2.13         | 200 • 7.8 | 300 • 11.8 | 337 • 13.27   |
| SE100/185T IP               | 414 • 16.29 | 256 • 10.1 | 200 • 7.87         | 44 • 1.73         | 200 • 7.8 | 300 • 11.8 | 337 • 13.27   |
| SE120/215T IP               | 417 • 16.40 | 300 • 11.8 | 215 • 8.46         | 44 • 1.73         | 200 • 7.8 | 300 • 11.8 | 330 • 13.00   |
| SE130/250T IP               | 417 • 16.40 | 340 • 13.4 | 250 • 9.84         | 60 • 2.36         | 200 • 7.8 | 350 • 13.8 | 350 • 13.87   |
| SE170/250TC IP              | 417 • 16.40 | 340 • 13.4 | 250 • 9.84         | 60 • 2.36         | 200 • 7.8 | 350 • 13.8 | 350 • 13.87   |







## Product Specifications Sheet

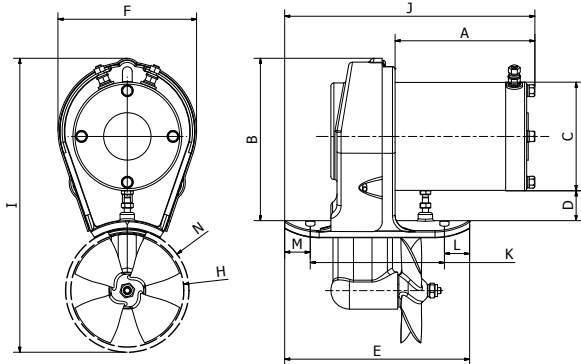


## Measurements EB Series

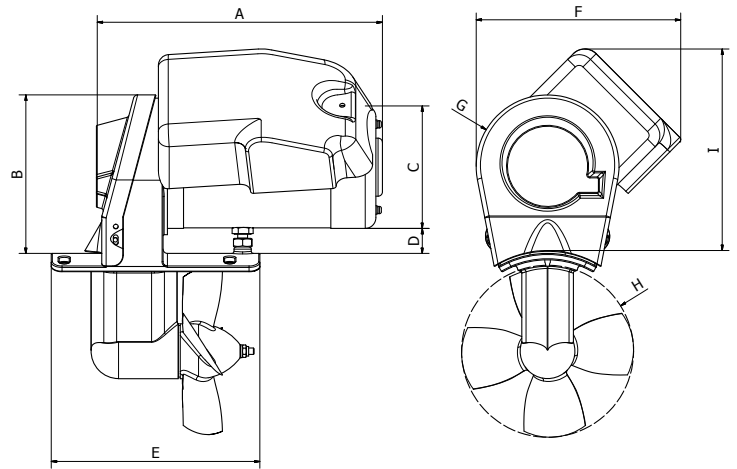
| Model | EBS20                   | EB40                    | EB60                    | EB75        | EB90        |
|-------|-------------------------|-------------------------|-------------------------|-------------|-------------|
| A     | 197 • 7.8               | 270 • 10.63             | 310 • 12.25             | 310 • 12.25 | 310 • 12.25 |
| B     | 158 • 6.25              | 150 • 6.0               | 150 • 6.0               | 150 • 6.0   | 150 • 6.0   |
| C     | 106 • 4.2               | 120 • 4.75              | 130 • 5.15              | 130 • 5.15  | 130 • 5.15  |
| D     | 29 +/- 5 • 1.15 +/- 0.2 | 15 +/- 8 • 0.6 +/- 0.32 | 15 +/- 8 • 0.6 +/- 0.32 | 50 +/- 8    | 50 +/- 8    |
| E     | 180 • 7.1               | 192 • 7.6               | 192 • 7.6               | 200 • 7.9   | 200 • 7.9   |
| F     | 135 • 5.32              | 198 • 7.8               | 210 • 8.3               | 210 • 8.3   | 210 • 8.3   |
| G     | 136 • 5.36              | 65,5 • 2.6              | 65,5 • 2.6              | 75 • 3.0    | 75 • 3.0    |
| H     | 110 • 4.34              | 160 • 6.3               | 160 • 6.3               | 185 • 7.3   | 185 • 7.3   |
| I     | 286 • 11.3              | 230 • 9.1               |                         |             |             |
| J     | 248 • 9.8               |                         |                         |             |             |
| K     | 130,5 • 5.12            |                         |                         |             |             |
| L     | 24,5 • 0.95             |                         |                         |             |             |
| M     | 25 • 0.99               |                         |                         |             |             |
| N     | 120 • 4.73              |                         |                         |             |             |

Measurements in mm • in

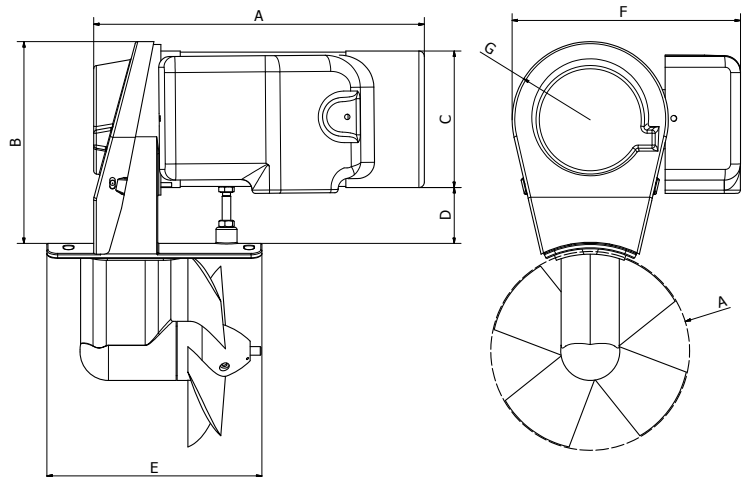
### EBS 20



### EB 40



### EB 60/ 75/90



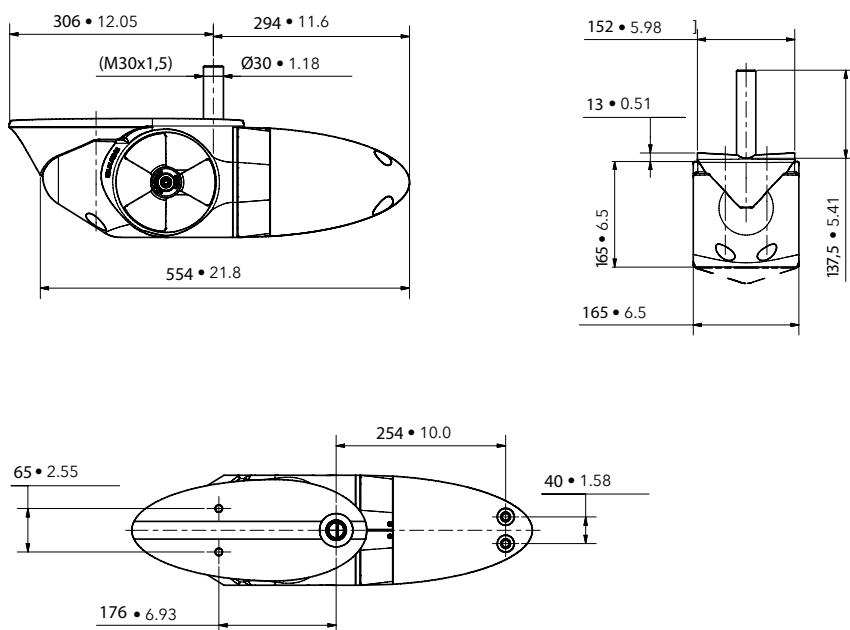


## Product Specifications Sheet

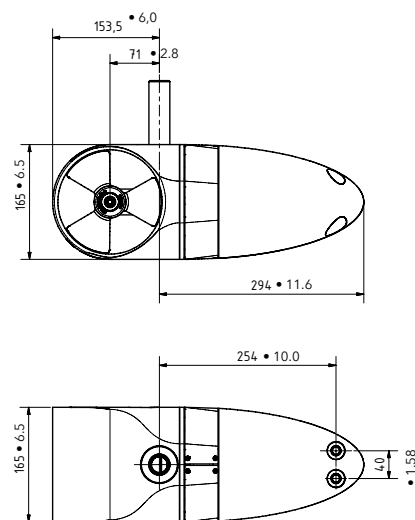


## Measurements EX Series

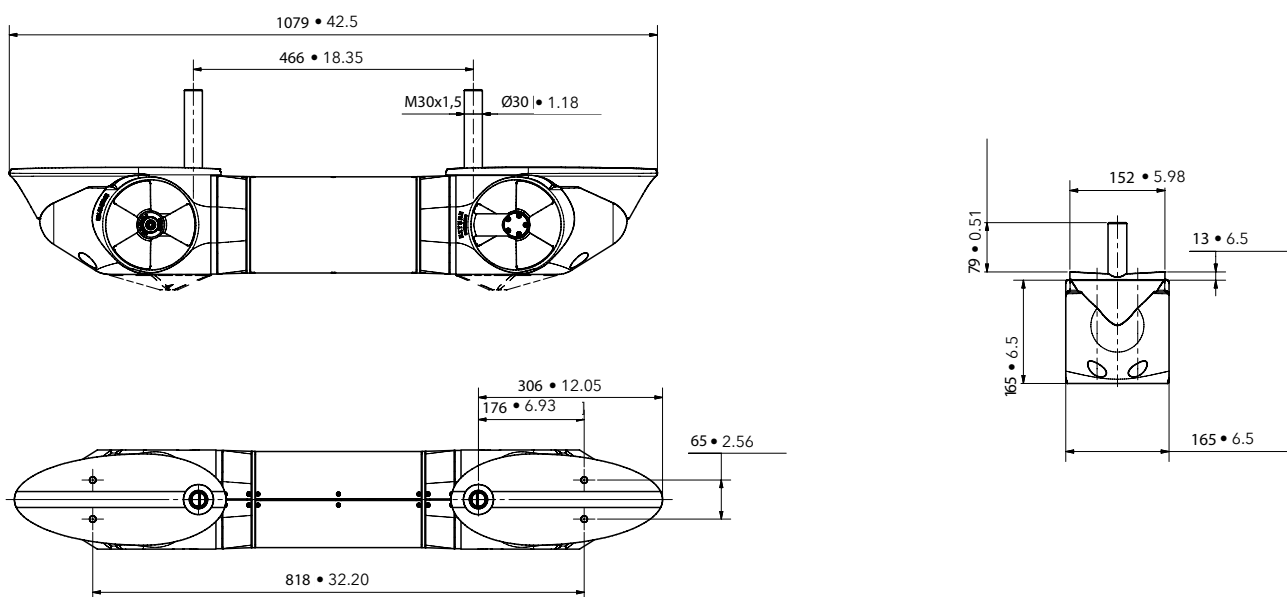
### EX Single



### EX Compact



### EX Dual

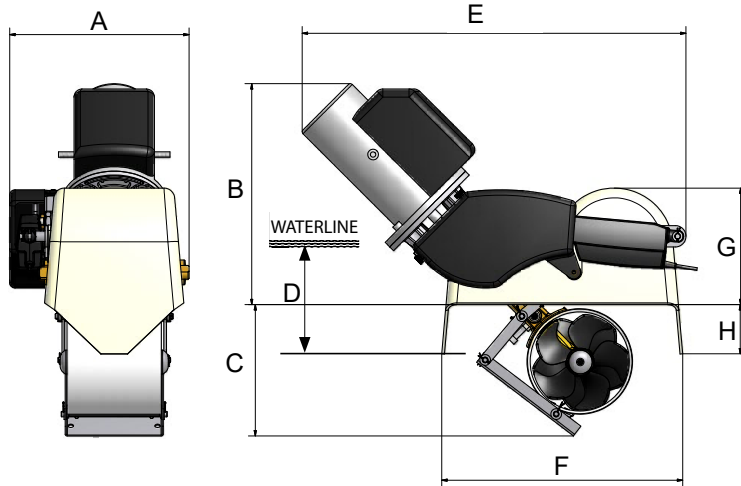




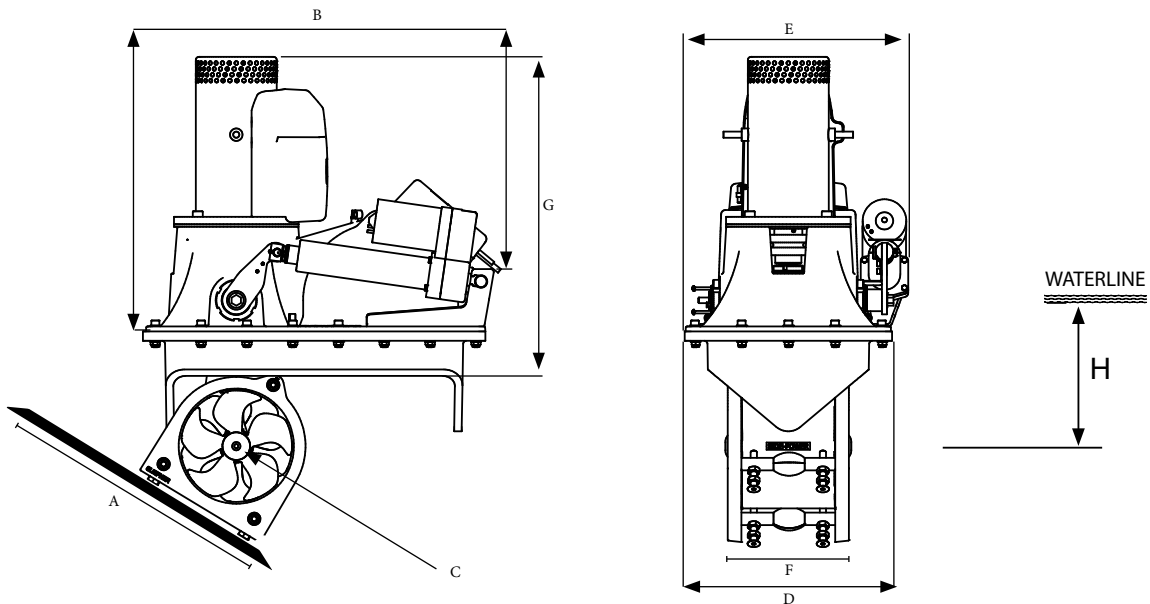
## Product Specifications Sheet



### Measurements SR Series



| Thruster<br>(mm • in) | A          | B          | C         | D <sub>min</sub> | E          | F          | G         | H        |
|-----------------------|------------|------------|-----------|------------------|------------|------------|-----------|----------|
| SR80/185T             | 335 • 13.2 | 413 • 16.3 | 245 • 9.6 | 185 • 7.3        | 716 • 28.2 | 450 • 17.7 | 218 • 8.6 | 92 • 3.6 |
| SR100/185T            | 335 • 13.2 | 460 • 18.1 | 245 • 9.6 | 185 • 7.3        | 745 • 29.3 | 450 • 17.7 | 218 • 8.6 | 92 • 3.6 |

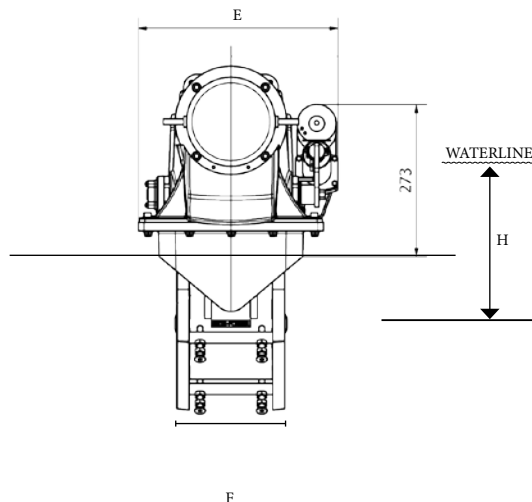
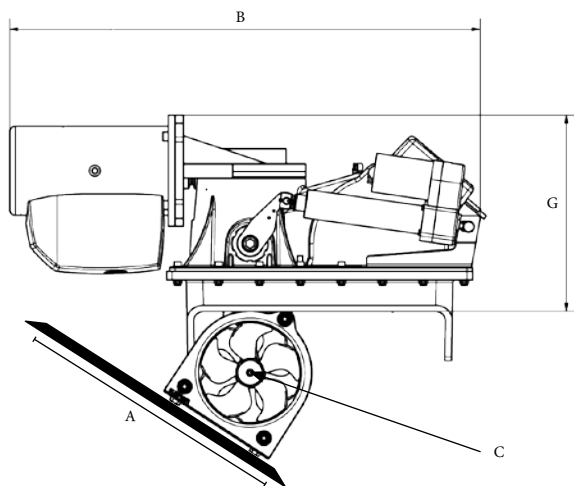


| Thruster<br>(mm • in) | A          | B          | C           | D          | E          | F          | G          | G <sub>(w. Hyd. motor)</sub> | H <sub>min</sub> |
|-----------------------|------------|------------|-------------|------------|------------|------------|------------|------------------------------|------------------|
| SRV80/185T            | 450 • 17.7 | 564 • 22.2 | Ø185 • 7.3  | 335 • 13.2 | 359 • 14.1 | 234 • 9.2  | 500 • 19.7 | 353 • 13.9                   | 185 • 7.3        |
| SRV100/185T           | 450 • 17.7 | 564 • 22.2 | Ø185 • 7.3  | 335 • 13.2 | 359 • 14.1 | 234 • 9.2  | 535 • 21.1 | 353 • 13.9                   | 185 • 7.3        |
| SRV130/250T           | 600 • 23.6 | 688 • 27.1 | Ø250 • 9.8  | 395 • 15.6 | 480 • 18.9 | 370 • 14.7 | 594 • 23.4 | 482 • 19.0                   | 250 • 9.8        |
| SRV170/250TC          | 600 • 23.6 | 688 • 27.1 | Ø250 • 9.8  | 395 • 15.6 | 480 • 18.9 | 370 • 14.7 | 609 • 24.0 | 482 • 19.0                   | 250 • 9.8        |
| SRV210/250TC          | 600 • 23.6 | 688 • 27.1 | Ø250 • 9.8  | 395 • 15.6 | 480 • 18.9 | 370 • 14.7 | 694 • 27.3 | 482 • 19.0                   | 250 • 9.8        |
| SRV285/300TC          | 600 • 23.6 | 843 • 33.2 | Ø300 • 11.8 | 580 • 15.6 | 580 • 22.8 | 413 • 16.3 | 732 • 28.8 | - - -                        | 300 • 11.8       |



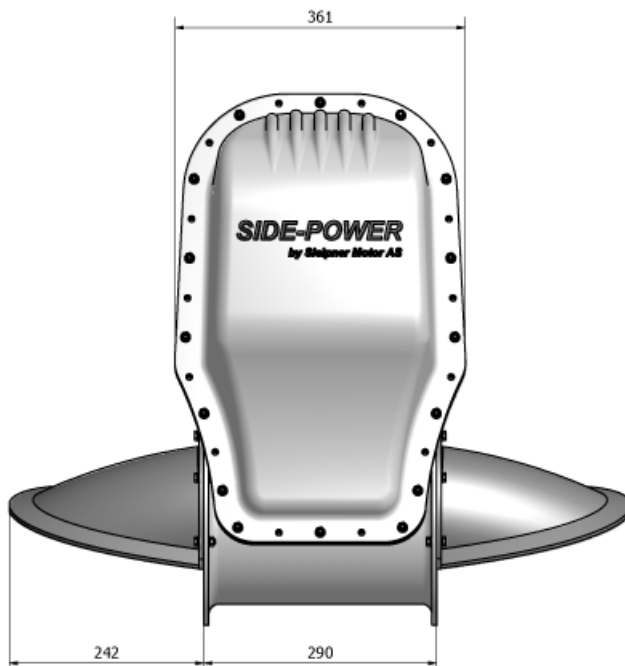
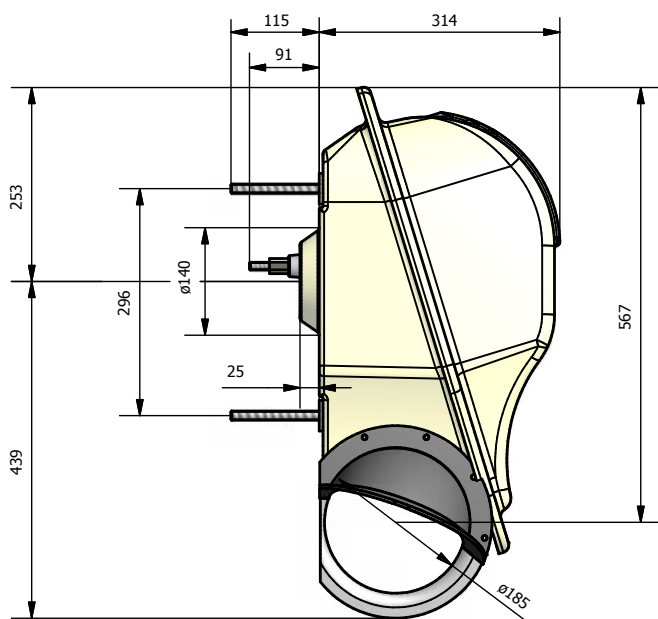


### Measurements SR Series



| Thruster<br>(mm • in) | A          | B          | C          | D          | E          | F         | G          | H <sub>min</sub> |
|-----------------------|------------|------------|------------|------------|------------|-----------|------------|------------------|
| SRL80/185T            | 500 • 17.7 | 845 • 33.3 | Ø185 • 7.3 | 335 • 13.2 | 359 • 14.1 | 234 • 9.2 | 352 • 13.6 | 185 • 7.3        |
| SRL100/185T           | 500 • 17.7 | 845 • 33.3 | Ø185 • 7.3 | 335 • 13.2 | 359 • 14.1 | 234 • 9.2 | 352 • 13.6 | 185 • 7.3        |

### Measurements SX Series



**Max. stern thickness: 100mm (80mm recommended)**





## Product Specifications Sheet



### Maintenance

- DC motor: See User and Installation manuals for each model for more information.

### Material specifications

- DC Motor: There are no hazardous materials in this product, ref material declaration.

### Health and Safety

- Gearleg and DC motor: The Gearleg is shipped with gear oil - precautionary measures must be taken . The gearleg and DC Motor is very powerful and precautionary measures must be taken considering rotating propeller and electrical installation. Gear oil is flameable and and gasses from a fire is generally toxic.
- See Installation and User manual for more information.

*This document may contain typographical errors and changes, to which Sleipner Motor assumes no responsibility.*



Sleipner Motor AS  
P.O. Box 519,  
N-1612 Fredrikstad, Norway  
Tel: +47 69 30 00 60  
Fax: +47 69 30 00 70  
sidepower@sleipner.no  
www.side-power.com



Confidence by Control

**SIDE-POWER.com**

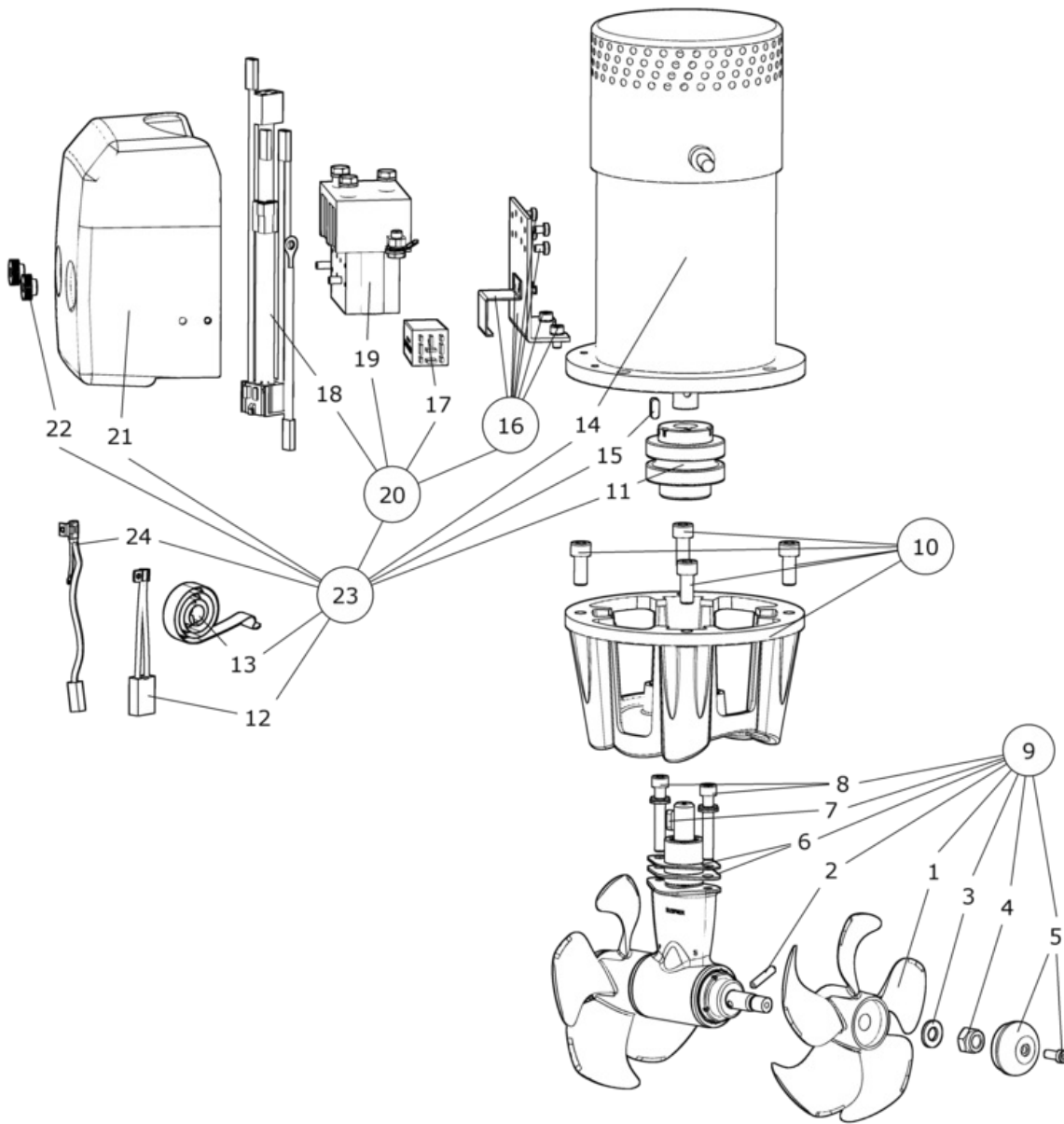
# SE100/185T-12V

## SE100 Tunnel bow/stern thruster, 12V

Spare parts (valid from 2016-08-29)



# SLEIPNER



| #  | Name                             | Item Code  | Description  |
|----|----------------------------------|------------|--|
| 1  | Propeller                        | 7 1261     | Thruster propeller Twin Ø185 / 5 bl                |
| 2  | Propeller drivepin               | 6 1241     | Drive pin for propeller 5mm                        |
| 3  | Propeller washer                 | 7 1181     | Propeller washer SE60/80/100                       |
| 4  | Locknut                          | 4 1260     | Lock nut   |
| 5  | Anode                            | 7 1190 A   | Anode kit, aluminium for SE60/80/100               |
| 6  | Gasket                           | 8 0610     | Gasket for gearleg installation in tunnel, SP75/95 |
| 7  | Driveshaft key                   | 6 1440     | Key for flexible coupling 7HP/SP75/95              |
| 8  | Gearleg bolt                     | 7 1080     | Bolt M8 x 55 Unbraco                               |
| 9  | Complete gearleg                 | 8 0601     | Complete gearleg SE80/100                          |
| 10 | Complete motor bracket           | 8 0501     | Complete motor bracket SE80/100                    |
| 11 | Complete flexible coupling       | 7 1462     | Flexible coupling Ø16/Ø20mm                        |
| 12 | Brushes for motor (kit)**        |            | **   |
| 13 | Brush springs for motor (kit)**  |            | **   |
| 14 | Electric motor                   |            | N/A  |
| 15 | Key for electric motor shaft     | 10 1440    | Key for drive shaft SP95/125++                     |
| 16 | Solenoid bracket kit             | 10 0135 24 | Solenoid bracket kit                               |
| 17 | Electronic control box           | 6 1232 I   | IPC relay 12/24V                                   |
| 18 | Internal wiring loom             | 15 1273 B  | Internal wiring harness                            |
| 19 | Solenoid                         | 1013713    | Solenoid replacement                               |
| 20 | Complete solenoid kit            | 9 0131 12  | Solenoid kit 12V SE100/130                         |
| 21 | Solenoid Cover                   | 8 2025     | Solenoid cover for SE100/130T-12                   |
| 22 | Nut for solenoid cover           | 6 8810     | Nut for solenoid cover                             |
| 23 | Complete electric motor assembly | 8 0101 12  | Complete electric motor for thruster SE100TI 12V   |
| 24 | Temp switch*                     |            | *  |

**(12)** \*\* Please provide thruster serial # when ordering brushes and brush springs.

**(13)** \*\* Please provide thruster serial # when ordering brushes and brush springs.

**(24)** \* Please provide thruster serial # when ordering Temp switch.

The installer alone has responsibility for the installation of the spare parts. Side-Power only warranty the spare parts supplied only.

The information given in the document was correct at the time it was published. However, Sleipner Motor AS can not accept liability for any inaccuracies or omissions it may contain. Continuous product improvement may change the product specifications without notice. Therefore, Sleipner Motor AS can not accept liability for any possible differences between product and document.