



Product Specifications SE25 - 110mm tunnel

NEW



Leading boat builders all over the world choose Side-Power for performance, reliability, ease of installation and unrivalled safety features. This commitment to quality and product development has made the Side-Power range of thrusters the benchmark in the industry.



Declaration of Conformity

We, Sleipner Motor AS hereby Declare that following Side-Power DC thruster products complies with the EC Directives and Standards:

Directive 2013/53/EU- Recreational Craft Directive
2006/42/EC - Machinery Safety
Directive 2014/30/EU - Electromagnetic Compatibility

SE series	Side-Power Electric Tunnel Thruster	25-210kg thrust ON/OFF
-----------	-------------------------------------	------------------------

FREDRIKSTAD, 21th of January 2017

Arne Skauen

Arne K Skauen
Managing Director, Sleipner Motor AS

Technical and safety specifications

- Motor:** Custom made reversible DC-motor.
- Gearhouse:** Seawater resistant bronze. Ball bearing at propeller shaft and combination of ball bearing and slide bearing at driveshaft. Pre filled and sealed for life.
- Motor bracket:** Glass fibre reinforced composite material. Brass thread inserts.
- Tunnel:** Cross spun with rowing G.R.P tunnel
Steel and aluminium tunnels are available on request.
- Propeller:** 5- blade skewback design "Q-prop" propeller, reinforced composite.
- Batteries:** Minimum recommended battery capacity (cold crank capacity by DIN/SAE standard)
See table.
- Max. use:** S2 = 3 min. or approx. 7-10% within a limited time frame.
- Safety:** Electronic time-lapse device protects against sudden change of drive direction. Electric thermal cut-off switch in electrical motor protects against over heating (auto reset when electrical motor cools down). Flexible coupling between electrical motor and driveshaft protects electrical motor and gear system if propeller gets jammed.

If original Side-Power panel is used, the panel shuts off automatically 6-9 minutes after last use.

Integrated microprocessor monitors solenoids, reducing wear and risk of solenoid lock-in. Auto-stop of thruster in case of accidental solenoid lock-in or if run signal is continuous for more than 3 minutes.





NEW



Specifications and performance data

- Actual performances will vary for each installation depending on many factors.
- Specifications shown here are based on a thruster installed at a depth equal to one tunnel diameter and with DC electric power at thruster as shown.

SE / Serie*

SE 25/110 S

Thrust at 12V* (kg • lbs)	30 • 66
Thrust at 10.5V* (kg • lbs)	25 • 55
Typical boat size (ft • m)	> - 24' • > - 7
Tunnel I.D (mm • in)	110 • 4.33"
Propulsion system	Single
Power at 10.5V* (kw • Hp)	1.5 • 2
For DC system (V)	12
Weight (kg • lbs)	9.5 • 21
Rec. CCA (CCA** 12/24V)	200/380

Art.nr. 12V SE25/110S-12V



Battery and cable recommendations

SE, - series

- All cable lengths are the total of both - and + cables.
- Battery size is stated as minimum cold crank capacity, not Ah.
- Use slow fuse rated to hold stated Amp-Draw for min. 5 minutes.

Minimum and recommended cable dimensions can be identical due to safety margins and cable heat considerations for short cable lengths.

* Minimum or recommended cable cross section in mm²

Model	Voltage	Nominal current draw	Min. battery CCA	Rec. fuse		<7m total + & -		7-14m total + & -		15-21m total + & -		22-28m total + & -		28-35m total + & -		36-45m total + & -	
						Min.	Rec.	Min.	Rec.	Min.	Rec.	Min.	Rec.	Min.	Rec.	Min.	Rec.
SE25/110S	12 V	200 A	DIN: 200	ANL	mm2	35	35	50	50	70	70	95	95	95	120	2x70	2x70
			SAE:380	150	AWG	1	1	1/0	1/0	2/0	2/0	3/0	3/0	3/0	4/0	2x2/0	2x 2/0



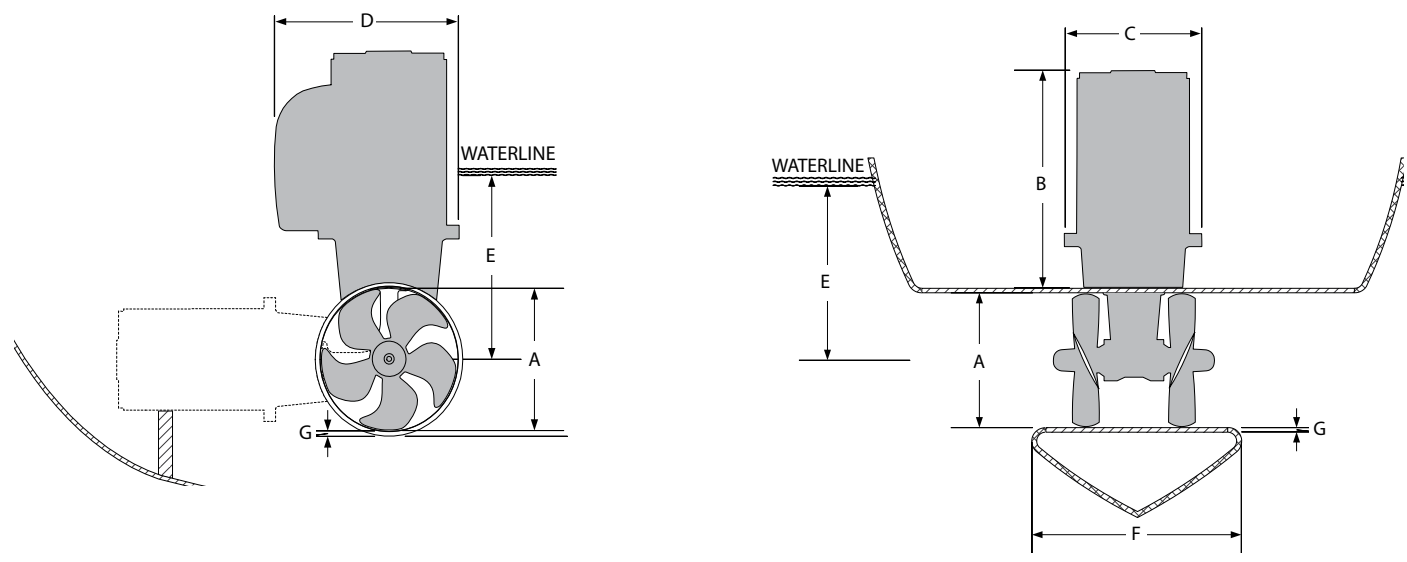
Confidence by Control

SIDE-POWER.com

Version 1_0_0_2017



Measurements SE Series



Thruster (mm)	A	B	C	D	E _{min}	F	F _{anbefalt}	G _{min}	G _{max}
SE25/110S	110	247	155	177	110	92	184	4	6



Maintenance

- DC motor: See User and Installation manuals for each model for more information.

Material specifications

- DC Motor: There are no hazardous materials in this product, ref material declaration.

Health and Safety

- Gearleg and DC motor: The Gearleg is shipped with gear oil - precautionary measures must be taken . The gearleg and DC Motor is very powerful and precautionary measures must be taken considering rotating propeller and electrical installation. Gear oil is flameable and and gasses from a fire is generally toxic.
- See Installation and User manual for more information.

This document may contain typographical errors and changes, to which Sleipner Motor assumes no responsibility.



Sleipner Motor AS
P.O. Box 519,
N-1612 Fredrikstad, Norway
www.side-power.com



Confidence by Control

SIDE-POWER.com

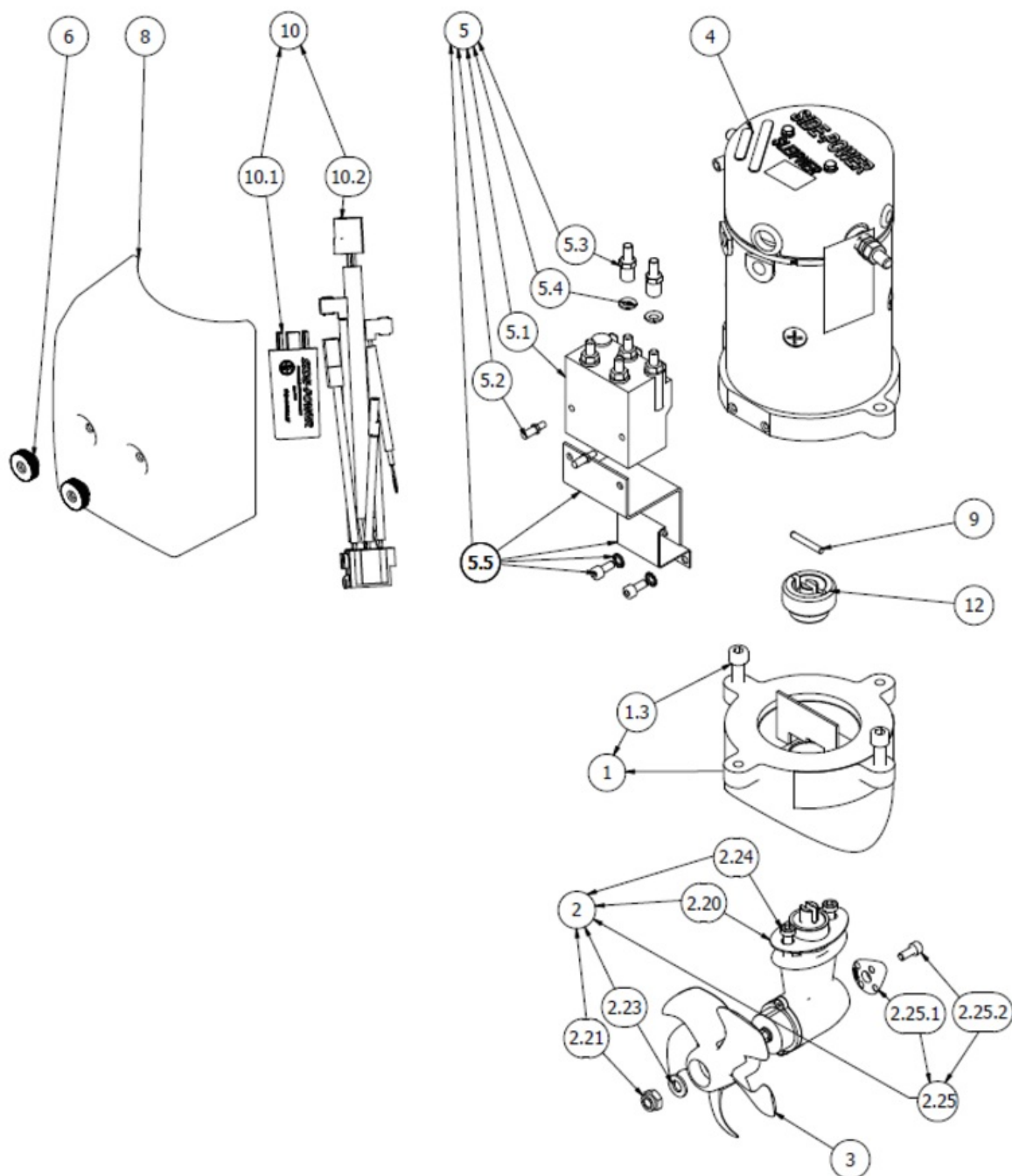
SE25/110S

SE25 Tunnel bow thruster, 12V

Spare parts (valid from 2021-06-30)



SLEIPNER



#	Name	Item Code	Description
1	Motorbracket complete Ø110	SM-126302	Complete motor bracket SE20/25
1.3	DIN 912 - M8 x 30	6 1360	Bolt M8 x 30 Unbraco
2	Gearleg u/propell	2 0600-U	Girhus SE20/25 mont. u/propell
2.20	Gasket	3 1310 10	Gasket for gearleg installation in tunnel, SE40
2.21	DIN 985 - M8x1,25	3 1250	Lock nut
2.23	DIN 125 - A 8,4	208125	Flat washer M8 A4
2.24	DIN 6912 - M6 x 30	110033	Hex socket head cap screw low M6 x30 A4
2.25	Anode Kit	3 1180 A	Anode kit
2.25.1	Anode	3 9998	Anode, aluminium, SE30/40
2.25.2	DIN 912 - M5 x 12	3 1172	Bolt M5 x 12 Unbraco
3	Propeller Ø107	2 1261	Thruster propeller SE25
4	Electric motor	2 1012 K	Electric motor SE30 12V
5	Rele mounted SE20/25/30 -12V	41571122	Solenoid replacement
5.1	Rele SE 30-12V	4 1571 12	Solenoid replacement
5.2	Set skrue dekse	6 1287	Fastening screw for solenoid cover
5.3	Foring messing	10 1274	Extension for cable connecting
5.4	DIN 128 - A6	SM-136745	Spring lock washer curved M6 elz
5.5	Solenoid bracket kit	2 0135	Solenoid bracket kit SE30
6	Plastic Nut	6 8810	Nut for solenoid cover
8	Relay Cover	3 2024	Solenoid cover for SE30
9	ISO 8734 - 4 x 28 - A	112032	Dowel pin 4 x 28
10	SE25 - 30	SM159145	Controller SE25-30
10.1	Delay relay	6 1232 I	IPC relay 12/24V
10.2	Internkobling SE30	6 1200 B	Internal wiring harness
12	Coupling	SM-125918	Flexible coupling SE20/30/40
13	Brushes for motor (kit)		**
14	Brushes spring for motor (kit)		**
15	Temp switch		**

(13) Please provide thruster serial # when ordering product.

(14) Please provide thruster serial # when ordering product.

(15) Please provide thruster serial # when ordering product.

The installer alone has responsibility for the installation of the spare parts. Side-Power only warranty the spare parts supplied only.

The information given in the document was correct at the time it was published. However, Sleipner Motor AS can not accept liability for any inaccuracies or omissions it may contain. Continuous product improvement may change the product specifications without notice. Therefore, Sleipner Motor AS can not accept liability for any possible differences between product and document.