

PIRANHA P24 SINGLE / P24DC DUAL | SURFACE MOUNT

PIRANHA
— S E R I E S —



PIRANHA P24 is the top of the range Piranha model with an incredible 12000 Fixture Lumens, Ultra high power, low price surface mount light.

3 models to choose from, single colour, Dual Colour or RGBW colour change.

Lights are controlled via a simple on/off toggle switch or via our I.Y.S Control system*.

Ultra-compact low profile design, suitable for transom and side mounting on all hull types. Simple installation just one small cable entry hole and 3 mounting screws

Built in driver technology with active thermal rollback.

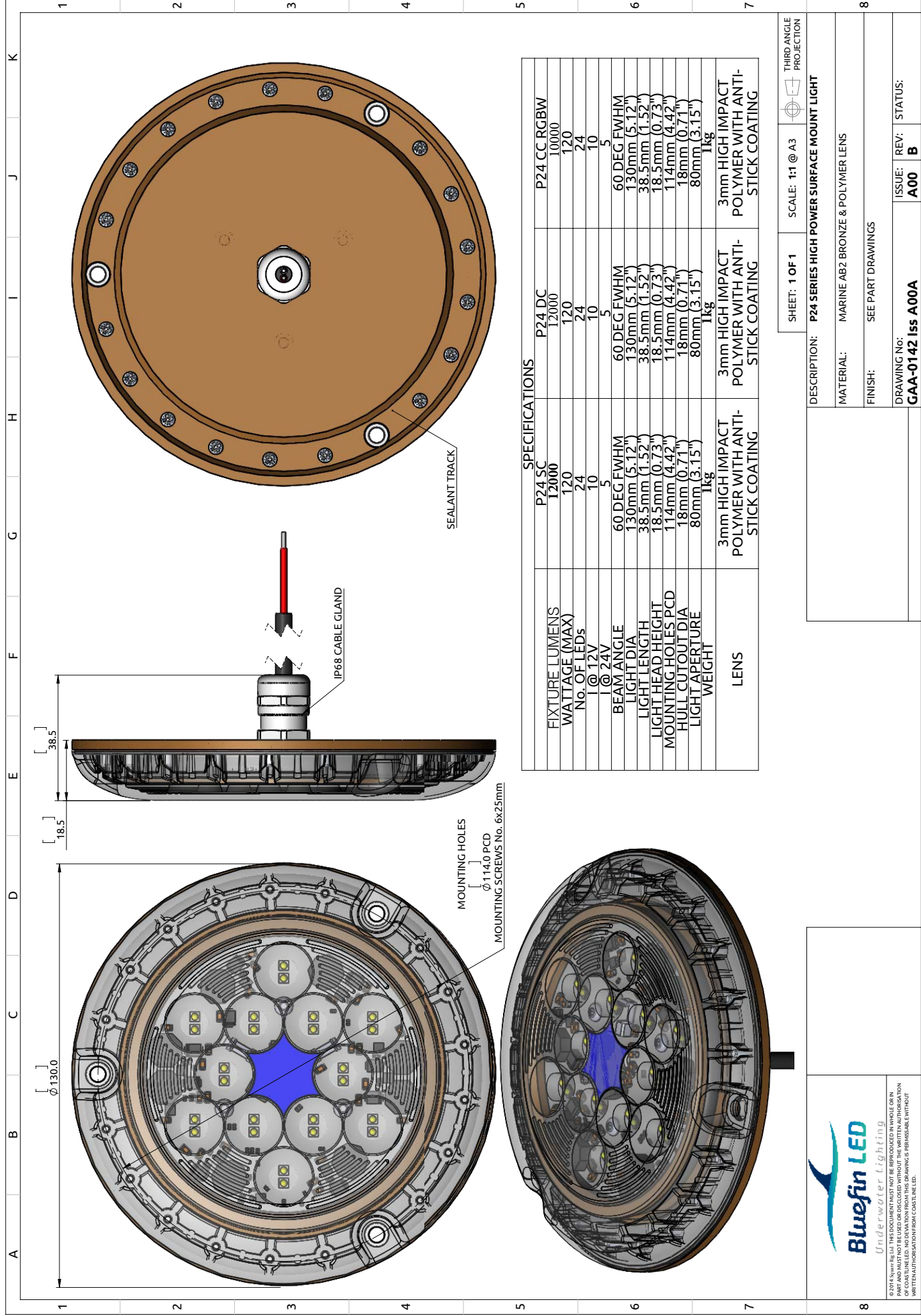
Suitable for in and out of water use.

- RINA Type approval
- 2-Year Warranty

SPECIFICATION	PIRANHA P24 SINGLE / P24DC DUAL
Mounting Type	Surface
Hole cut out size	18mm
Maximum Lamp Lumens	21500
Fixture Lumens	12000
Max Wattage	120
Typical Life Expectancy	50,000 Hours
Voltage	12 / 24v Multi-voltage
Power Draw	10 amps @ 12v / 5 amps @ 24v
Protection	Over / Under Voltage, Over Current, Reverse Polarity protection, Active thermal protection. Hydro block technology.
Fixture Profile	18.5mm
Fixture Diameter	130mm
Lens Type	3mm Optical grade high impact polymer, Guard X Coating
Fixture Material	AB2 Bronze (standard) or Aluminium
Beam Angle	60 Degree FWHM
Warranty	2 Year
Type Approval	RINA IEC 60529
Available Colours	Diamond White 6500k Cobalt Blue Dual Colour White/Blue
Suitable Use	Above & below the water-line
Spacing	1.8 - 2.2mtr
Driver Type	Integral
Total weight	1 kg
Attached cable length	2 mtr Over-moulded
Included in box	In-line fuse holder & rated fuse, Gel connector, Inline Crimps, Heat shrink, Fixing Screws, Template and installation instructions
ACCESSORIES	(OPTIONAL)
Junction Box	4 Way IP68 Wiring Junction Box
BL-Switch	Panel mount illuminated switch & wiring loom
220/110v Power Supply	Power supply 24v
I.Y.S Lighting Control	Control via MFD screen or mobile device
Delrin Sleeve	Isolating kit for steel, aluminium and carbon fibre hulls



All Piranha models now available in aluminium finish to suit aluminium/composite hulls



SPECIFICATIONS		P24 DC	P24 CC RGBW
FIXTURE LUMENS		12000	10000
WATTAGE (MAX)		120	120
NO. OF LEDs		24	24
	1 @ 12V	10	10
	1 @ 24V	5	5
BEAM ANGLE		60 DEG FWHM	60 DEG FWHM
LIGHT DIA		130mm (5.12")	130mm (5.12")
LIGHT LENGTH		38.5mm (1.52")	38.5mm (1.52")
LIGHT HEAD HEIGHT		18.5mm (0.73")	18.5mm (0.73")
MOUNTING HOLES PCD		114mm (4.42")	114mm (4.42")
HULL CUTOUT DIA		18mm (0.71")	18mm (0.71")
LIGHT APERTURE		80mm (3.15")	80mm (3.15")
		1kg	1kg
LENS		3mm HIGH IMPACT POLYMER WITH ANTI-STICK COATING	3mm HIGH IMPACT POLYMER WITH ANTI-STICK COATING

SHEET: 1 OF 1 SCALE: 1:1 @ A3 THIRD ANGLE PROJECTION

DESCRIPTION: **P24 SERIES HIGH POWER SURFACE MOUNT LIGHT**

MATERIAL: MARINE AB2 BRONZE & POLYMER LENS

FINISH: SEE PART DRAWINGS

DRAWING No: **GAA-0142 Iss A00A** ISSUE: **A00** REV: **B** STATUS:

Bluefin LED
Underwater lighting

THIS DRAWING IS THE PROPERTY OF BLUEFIN LED. IT IS TO BE USED ONLY FOR THE PROJECT AND SITE SPECIFICALLY IDENTIFIED IN THE DRAWING. NO PART AND MATERIALS TO BE REPRODUCED OR DISCLOSED WITHOUT THE WRITTEN AUTHORIZATION OF BLUEFIN LED. NO DEVIATION FROM THIS DRAWING IS PERMISSIBLE WITHOUT WRITTEN AUTHORIZATION FROM BLUEFIN LED.