



# Cooling Unit VE200 PLUG&PLAY

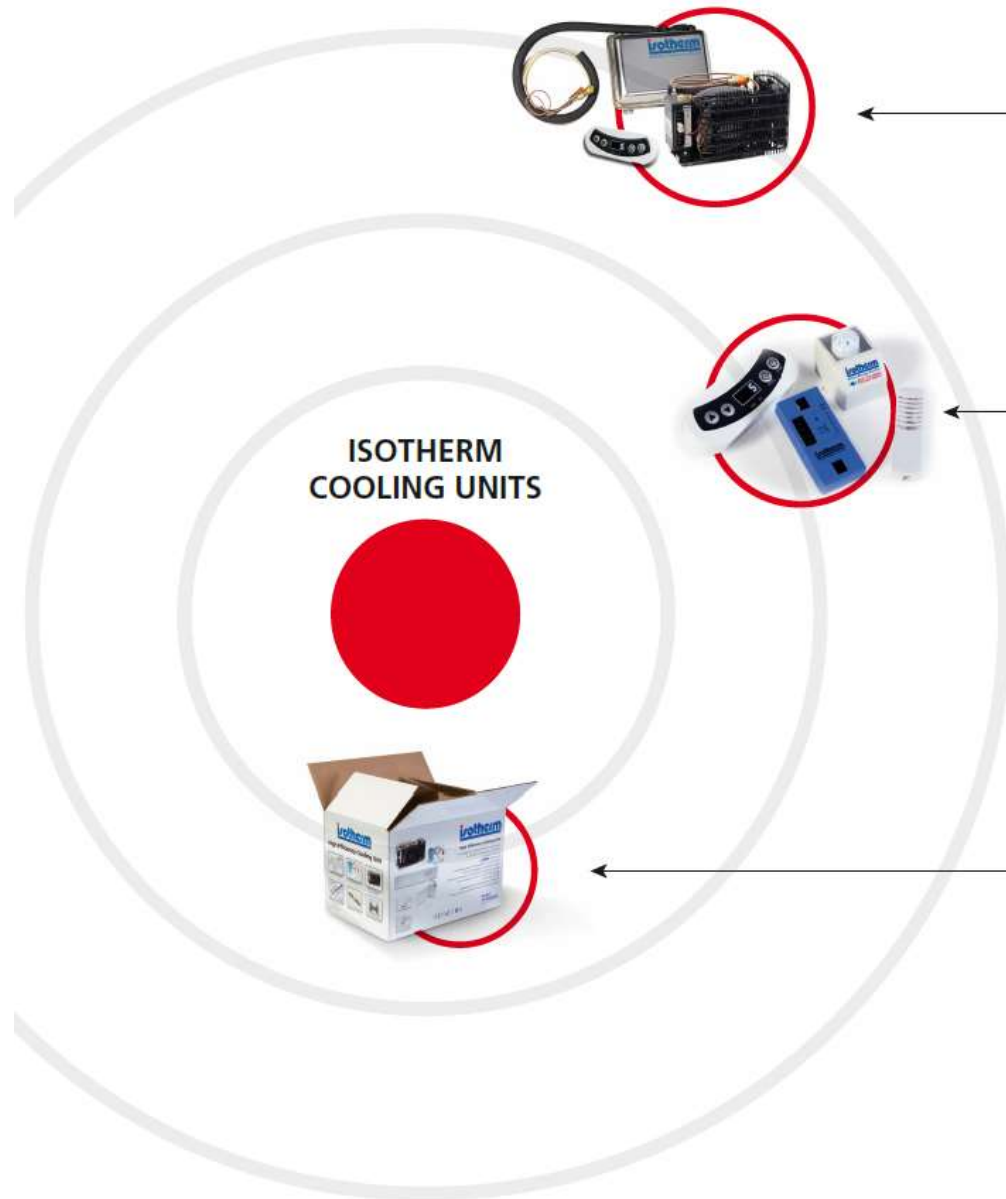
---

PRODUCT INFORMATION No. 2024-01

**Indel Webasto Marine**

- ✓ Isotherm supplies an unbeatable portfolio in Cooling Units, ranging from small-size, fan-cooled models up to exclusive high liter capacity ones, offering many application variants to clients
- ✓ Customers can select the best control system based on their application needs with the unique plus of being delivered with a **self-explanatory all-in-one packaging**
  - ✓ The product selection is based (main matrix customers' choice):
    - ***On saving energy factors***
    - ***Control type device***
    - ***Cooling performances***

## AN EASY SOLUTION MATCHING PERFECTLY ANY DEMAND



### HIGH QUALITY COOLING UNITS

- SECOP compressors 12/24V - AC/DC as option
- Air cooled or water cooled (Magnum or Self-pumping)
- Multi-purpose: fridge or freezer
- All sizes : from 60 liters up to 600 liters

### MULTIPLE POWER SAVING OPTIONS

Define your needs, select your Isotherm unit

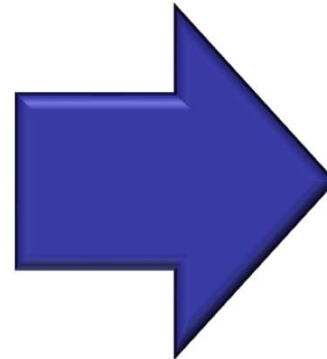
	Control Interface	Energy Saving	Fast Cooling	Functions
Thermostat	Mechanical	0	++	
	Digital	++	++	1. Dynamic control of battery charging status 2. Standard energy savings (overcooling, fixed compressor speeds)
	Digital	+++	+	3. Eco mode to extend battery autonomy 4. AC and/or DC applications possible
	Mechanical	++++	+++	1. Full modulation of compressor' speed 2. Advanced parameter settings to maximize energy savings 3. High savings without need for cold storage device 4. DC application only

### ALL IN ONE PACKAGING

**3+1**: cooling unit + evaporator + control in one box  
 Colourful, self-explanatory packaging for aftermarket  
 Fast installation: re-usable quick couplings and click-on compressor system



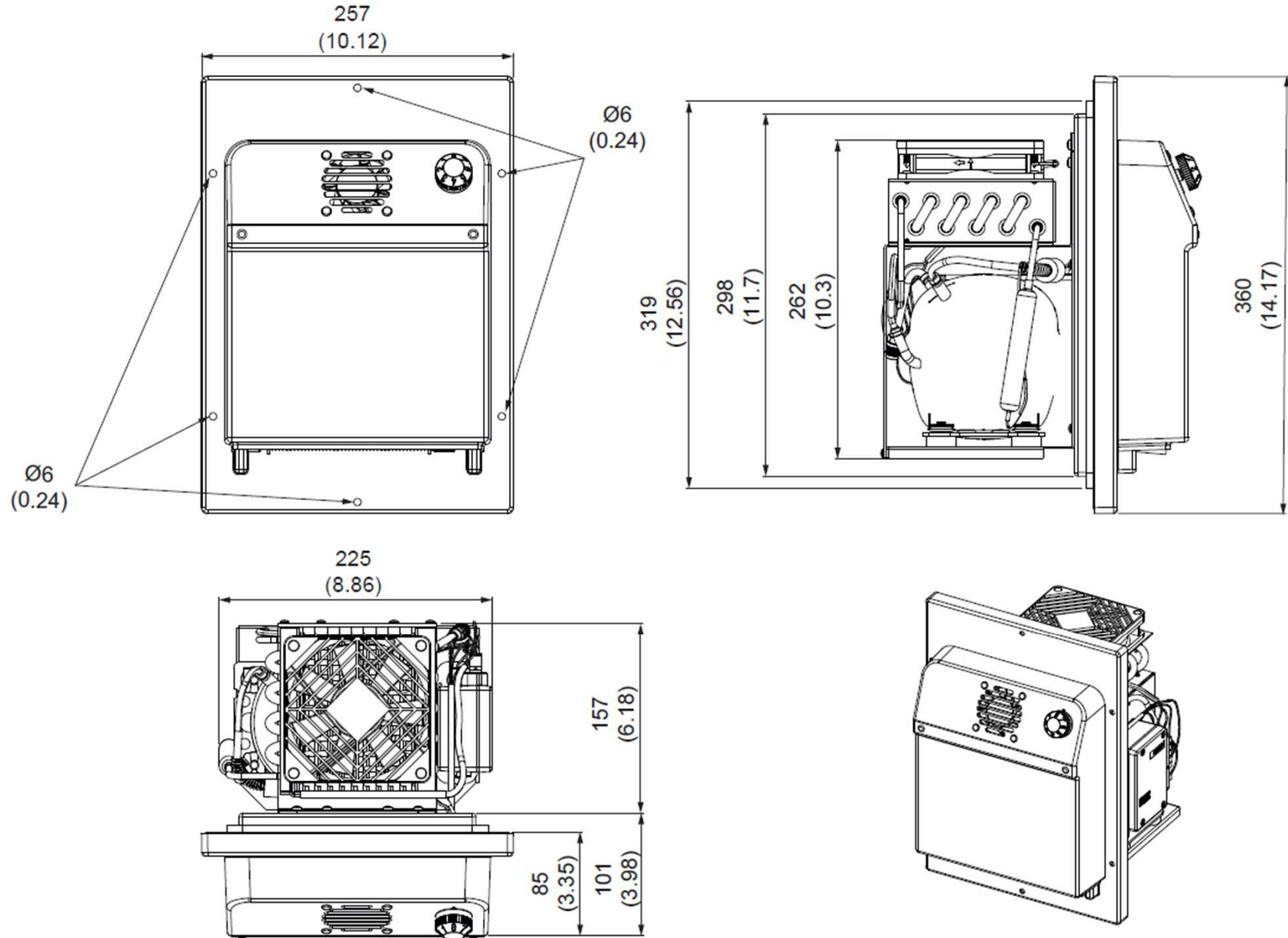
- ✓ If you want to take advantage of free space on board, transforming an unused area into a practical refrigerating solution, the VE200 PLUG&PLAY is the product you are looking for!
- ✓ What differentiates it from the original model is the supply of the whole main components into a unique solution that allows an immediate on-board installation, in one action!
- ✓ There will be no need for a highly qualified technician within the installation process, since the product's fixing is easy to perform:
  - ***Six available hinges points***
  - ***Gasket set pre-mounted, on the insulated wall***
  - ***Pre-charged gas unit***
  - ***No gas pipes welding action required***
  - ***No gas pipes couplers connection required***
  - ***Only DC power supply is needed !***



VE 150 Cooling Unit



VE200 PLUG&PLAY  
Cooling Unit



## Features and Benefits:

- ✓ Fridge function
  - Operating range (0°C ÷ +11°C fridge)
  - ST Certified (from 16°C to 38°C)
  
- ✓ Up to 200lt fridge function cooling capacity (insulation thickness reference 4/5 cm)
  
- ✓ Equipped with SECOP BD 35F 12/24V, reliable & performing
  
- ✓ **Maximum efficiency**, compressor's RPM set @ 3500
  
- ✓ Available in standard DC version, AC/DC compatibility is provided via the isotherm power pack (ref. PI 2022\_03)



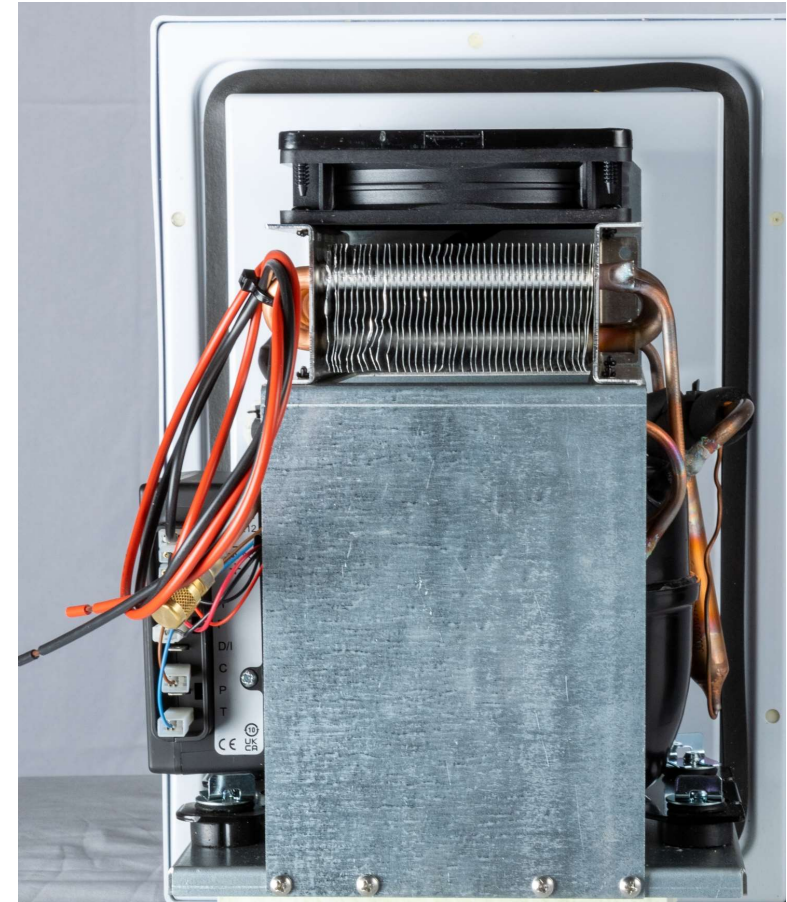
### Features and Benefits:

- ✓ 6 pre-fit hinge points to easier the application in customer's cabinet
- ✓ Insulated wall, provided with an in-built sealing gasket
- ✓ Ventilated fin evaporator, to ensure a well balances temperature in the fridge compartment
- ✓ Easy-to use thermostatic control, for greater cooling performances



### Features and Benefits:

- ✓ Compressor/condensing unit pre-mounted, on the back side insulated wall
- ✓ Galvanized compressor bracket, corrosion resistance
- ✓ Fan-cooled fin condenser for a greater heat exchange and thermal efficiency
- ✓ Battery friendly, the isotherm control logic automatically shuts off the units' operation, in case of under voltage threshold reaching



Model	VE200 PLUG&PLAY
Volume Range (L)	150/200
Evaporator Dimensions (W*H*D mm)	360*257*258
Net Weight (kg)	8
Climatic Class	ST
Compressor Parts	BD 35F / 101N0240
Rated Voltage/Frequency (V)	DC 12 / 24
Rated Power Input (W)	72
Power Consumption(kW·h/24h) at 25° C and cabinet module as per manual	0,714
Temp. Control	Mechanical thermostat
Refrigerating Gas	R134a (58g)
Cooling Mode	Single Cycle Direct Cooling
Evaporator	Embedded
Condenser	Lamellar
Refrigeration Performance (° C) @+25° C	0+11

t.a stands for Ambient Temperature

Performance data refer to the cabinet built according to the instructions given in the manual.

Thermostat position	Internal temperature @ t.a. +16°C [°C]	Internal temperature @ t.a. +25°C [°C]	Internal temperature @ t.a. +32°C [°C]	Internal temperature @ t.a. +38°C [°C]	Internal temperature @ t.a. +43°C [°C]
0	Off	Off	Off	Off	Off
1	10	10	10	10	10
2	8	8	8	8	8
3	6	6	6	5	7
4	5	5	4	3	6
5	3	3	2	3	6
6	1	0	0	3	6
7	-1	-2	-2	3	6

t.a stands for Ambient Temperature

Performance data refer to the cabinet built according to the instructions given in the manual.

	Thermostat position	Min reachable temperature [°C]	Max reachable temperature [°C]	Average temperature [°C]	Compressor Duty Cycle [%]
t.a. +16°C	1/7	9,6	10,1	9,9	14
	4/7	4,2	5,3	4,7	24
	7/7	-2,2	-0,2	-1,2	45
t.a. +25°C	1/7	8,8	10,6	9,7	32
	4/7	2,9	5,5	4,2	49
	7/7	-4,4	-0,7	-2,6	80
t.a. +32°C	1/7	8,4	10,9	9,6	45
	4/7	1,6	5,2	3,4	70
	7/7	-4,6	-0,3	-2,6	100
t.a. +38°C	1/7	7,5	11,1	9,2	65
	4/7	0	5,1	2,5	100
t.a. +43°C	1/7	5,9	10,6	8,3	86
	4/7	3,4	8,6	6,0	100

t.a stands for Ambient Temperature

Performance data refer to the cabinet built according to the instructions given in the manual.

## Part Numbers, Description, Prices and Availability

Part Number	Description	Price
U200N000F11111AA	VE200 PLUG&PLAY	PLS contact IWM

## Part Numbers, Description, Prices and Availability

- ✓ Indel Webasto Marine VE200 PLUG&PLAY is produced in Italy and must be ordered from the warehouse in Secchiano, Italy
- ✓ No minimum order quantity is requested
- ✓ Delivery time is usually 4 weeks from order; minimum stock-in-trade always available for emergencies

---

## Certificates, Documentation, Packaging Details, Maintenance and servicing

- ✓ Indel Webasto Marine VE200 PLUG&PLAY is provided with CE certification
- ✓ Instruction and user manual is included in the packing





Easy to install, no qualified technician required



Gas pre filled cooling unit



Fridge function, up to 200lt. capacity



Ventilated Fin-Evaporator, for a balanced temperature control



Secop BD 35 technology



AC/DC option via isotherm Power Pack

Thank you for your attention!