

# Divino Wine Cellars & Cooler

## Divino The One - Divino The Eight

Serve great wine or champagne.

### Divino The One

Divino The One is an integrated wine cooler that keeps wine perfectly chilled during service. It's extremely simple to use: just touch any part of the crown with your finger to activate your Divino The One. Touch and serve your wine always at the right temperature.

The Divino The One is based on a powerful thermoelectric core unit that creates an instant cold air jacket around the bottle.

Once integrated, the only visible part will be the stainless steel crown, capable to match the typical marine-style applications.

### Using it will make your wine tasting more fun!

Tap the crown three times and scroll through the colour selection of 27 options to personalize it.

By tapping four times the crown, the illumination will gently fade through the full colour selection.

- Perfect serving temperature for your wine
- Elegant integrated design
- Jacket of cold air: no more wet bottles and water stains
- Performing and reliable: 3 years warranty, maintenance free

### Divino The Eight

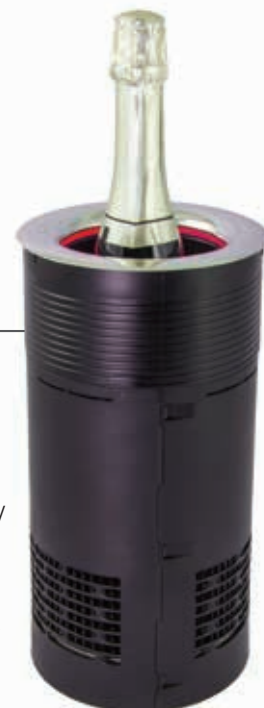
The new Divino The Eight is a premium wine storage device, capable to welcome up to 8 bottles of wine. It is a wine cellar DC 12/24V based, with the optional of Isotherm AC/DC Power Pack for multiple purposes.

Its glass-based transparent door and the 3 sides flush mounting flange in stainless steel allow the best on board integration: A specific locking mechanism prevents unwanted opening of the door in rough seas.



### Convincing factors of the Divino The Eight:

- Elegant and practical design, double glass chamber sealed door DC based
- Exclusive stainless steel bottle rack, to store 4 bottles in two rows (8 bottles in total)
- Interior LED light
- Custom temperature settings for white or red wine



### The One - a brief tour

#### 1. Smart-touch crown

- Control with just a touch
- Crafted from stainless steel
- Seamless edge-to-edge curve
- Polished to a mirror finish (not plated)
- No buttons or displays needed

#### 2. Interactive LED lighting

- 27 colours
- Select colour using touch
- Option to use without light
- Colour fade mode

#### 3. Bottom threaded ring included in the supply

#### 4. Simple installation

- Ideal for inner and outer cockpit application
- Does not require specialist installation
- Install into a 154 mm hole
- Super compact: 160 mm wide, 300 mm deep
- Low power, uses only 60 W
- 12V DC as standard, Isotherm AC/DC power supply ready for AC application

#### 5. Patented Kryolux™ Technology

- Completely dry cooling
- No ice, water, CFCs or other refillables
- Caters for extra wide 75 cl bottles
- Automatic standby after 2 hours
- Runs silently

