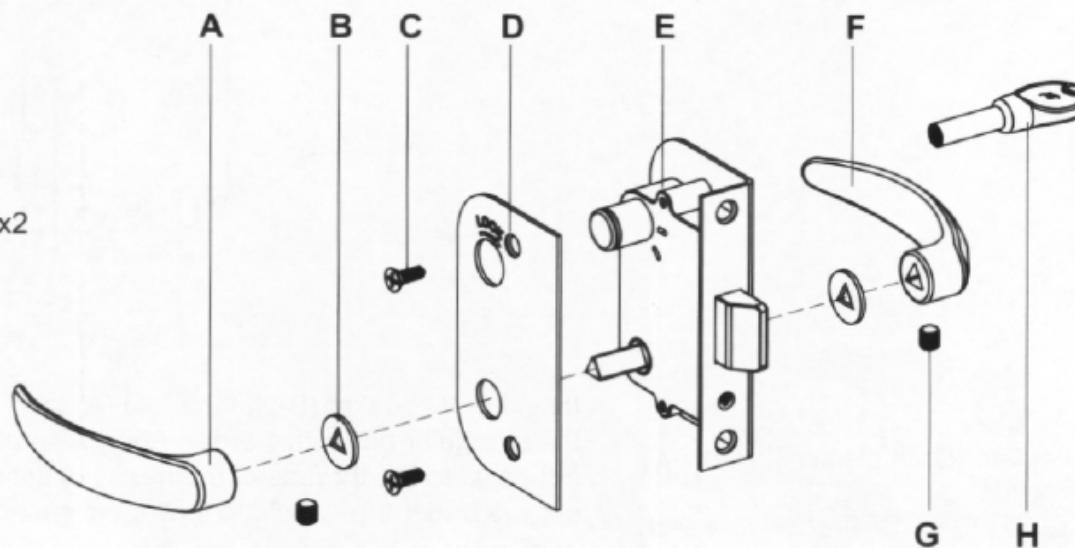


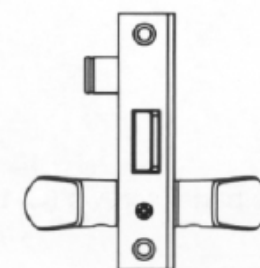
# PRIVACY DOOR LATCH

Exploded Drawing

- A. Left handle x1
- B. POM gasket x2
- C. Panel screw x2
- D. Faceplate x1
- E. Main body x 1
- F. Right handle x 1
- G. Hexagon set screw x2
- H. Universal key x 2

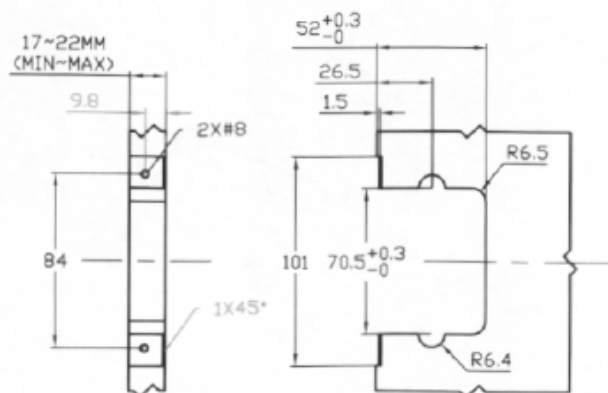


Disassemble the components in this order: Remove the hexagon set screw (G), detach the left handle (A), detach the right handle (F), take out the POM gasket (B), and unscrew the panel screw (C). Finally, disassemble the faceplate (D).



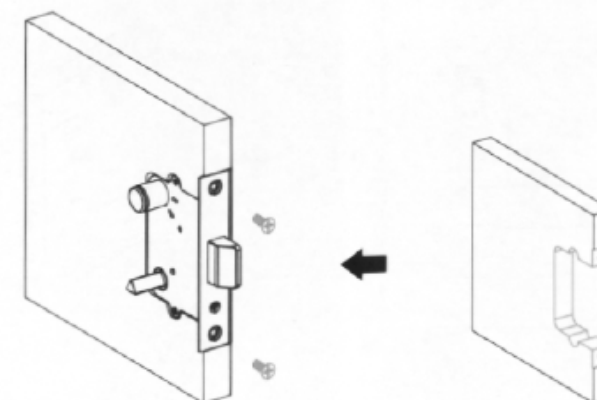
1

Unit: mm



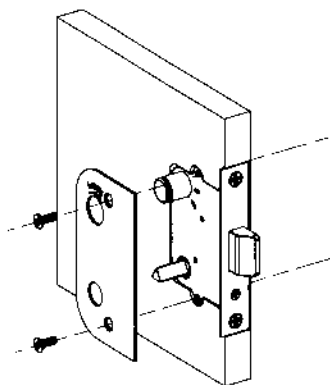
Create an installation hole based on the provided pattern.

2



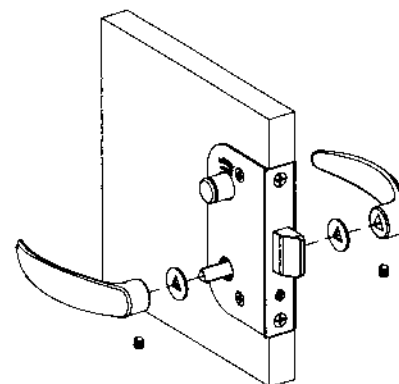
Secure the main body (E) by fastening it with tapping screws (not included).

3



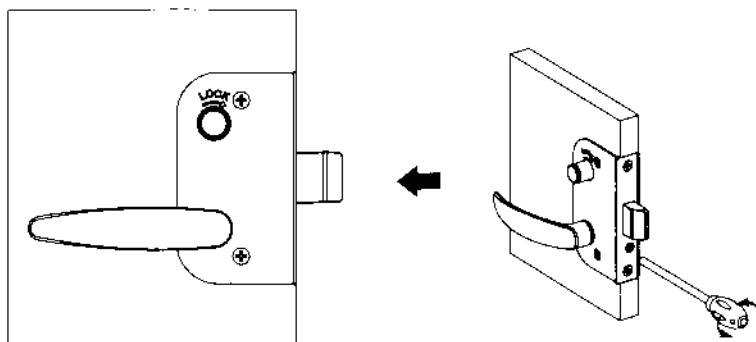
Use panel screws (C) to screw the faceplate (D) in place.

4



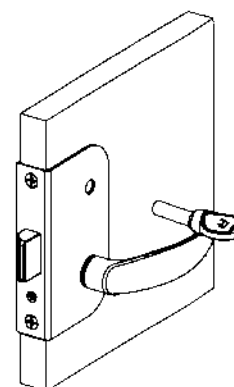
Install POM gasket (B), left handle (A), and right handle (F) onto the triangular bar in this order. Apply a small amount of anaerobic adhesive to the threads of the hexagon set screws (G). Tighten the screws under the handle to lock them securely.

5



To adjust the slide length, locate the screw positioned beneath the slide. Use a screwdriver by turning it clockwise to extend the slide or counterclockwise to reduce the slide length.

6



Installation complete.