

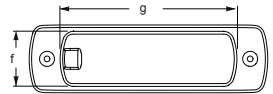
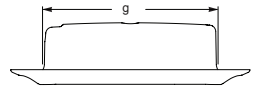
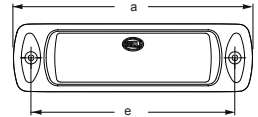
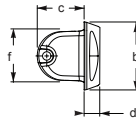
INSTRUCTION SHEET

LED Sea Hawk - Recess LED Deck Floodlight

Introduction

Hella marine LED products offer many advantages over conventional bulb lamps. Significantly reduced power consumption, ultra long life and high tolerance to shock and vibration make the LED lamps the ideal choice for the harsh marine environment.

Housing Material	UV and impact resistant plastic
Lens Material	Heavy duty polyamide
Light Source	LED
Installation	Pre-wired with marine cable
Operating Voltage	Multivolt™ 9-33V DC
Degree of Protection	Over Voltage, Reverse Polarity, Spike Protected IP 67 - Completely sealed
Power Consumption	<3W (<0.25A@12V / <0.125@24V)
Weight	250g (including cable)
Light Output	240 lumens
Color Temperature	5500K
Manufacturing Location	New Zealand



Dimensions

a = 176mm / 6.93"
b = 50mm / 1.97"
c = 35mm / 1.38"
d = 12mm / 0.47"
e = 150mm / 5.91"
f = 42mm / 1.65"
g = 132mm / 5.20"

Electromagnetic Compatibility (EMC)

This LED lamp is an electronic device. The electrical circuits contain components that suppress possible interference, both emission as well as susceptibility.



Protection against damage due to voltage spikes

This lamp is protected against reverse polarity connection and negative voltage spikes of up to 500 volts.

Wiring Colour Coding

LED modules are polarity conscious. Reverse polarity will not damage this product but will inhibit its function. Hella recommends wire connections be soldered, and heat shrink tubing applied to seal the joint.

Cable colour	Connect to	Power Consumption
Red	Positive (+)	< 3.0 watts
Black	Negative (-)	

NB: Lamp must be protected by a fuse rated at 5 amperes maximum.

www.hellamarine.com

Warranty Statement

Congratulations! The product you have selected comes from Hella marine - one of the world's leading manufacturers of marine lighting products.

Hella marine branded products are covered by a warranty against manufacturing or material defects. (For further details please check the terms of trade with your Hella marine agent).

The lamp module is sealed and does not have any serviceable parts inside; opening the module will invalidate warranty. In the unlikely event that you should experience a problem with your purchase, please contact your Hella marine agent where you purchased the product.

For general comments please contact us on E-mail at techfeedback@hellamarine.com

