

# LUX Strip Light SL180 (IP68) CRGBW (Cut and Seal) Installation Guide

Full spectrum color tunable lighting, including cold and warm white light

*Please read the following pages before attempting installation to ensure complete understanding of the LUMISHORE Strip Lights*

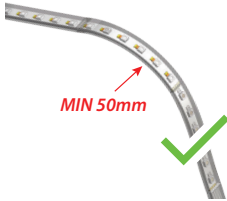


## Before you start...

- Always ensure that the vessel's power source and battery are disconnected or isolated prior to installation.
- A qualified professional should carry out both the electrical and mechanical installation.
- The Lux Strip Light is designed to be used in conjunction with the Lumishore Lux Strip Light Driver modules (see diagram below). Do not connect to any other 3rd party lighting control products or drivers.
- The lux Strip Light must be cut and sealed prior to installation. Failure to follow the instructions in this manual will invalidate the warranty. Only sealant supplied is to be used.
- The lux Strip Light is fully sealed and can be installed inside or outside, it can be installed in wet areas but is not designed to be permanently submerged in water.
- Choose a location – the Strip Light is made from UV resistant material but should not be installed in areas of strong direct sunlight.
- The Strip Light has a bend radius of 50mm in the vertical axis, do not bend in the horizontal axis or twist the Strip Light.

**Handling & Manipulating:**

**VERTICAL BEND ONLY**



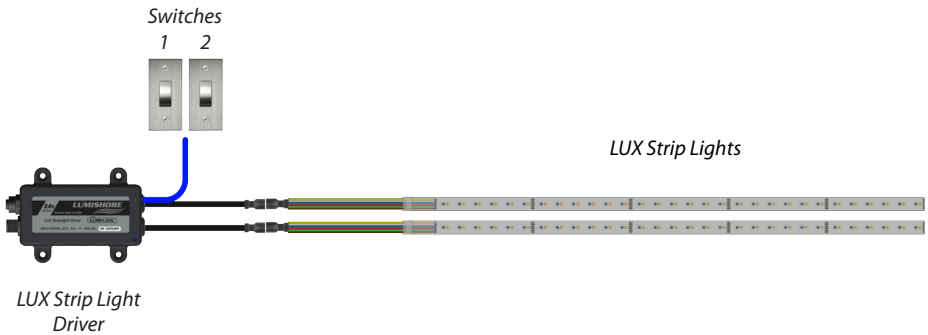
**DO NOT BEND IN HORIZONTAL AXIS**



**DO NOT TWIST**



**Installation Diagram:**



NOTE : The Lumishore Lux Strip Lights requires connection to the Lumishore LUX Strip Light Driver Module. For full electrical installation and wiring diagrams please refer to the LUX Strip Light Driver Installation Manual (45-0143).

Power Rating = 5 watts Per Meter

Voltage Input Range = 23 - 25V\*

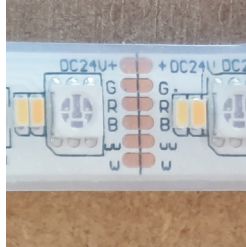
**\*ONLY USE WITH LUMISHORE STRIP LIGHT DRIVER MODULES**

**Cutting to length**

Unreel the striplight onto a flat surface and identify correct end to be cut. Measure and mark out the required length to cut. If installing around curved areas or corners we recommend that the strip light is "offered up" before cutting to ensure correct length has been marked out.



1. Locate the closest cut point to the length required.



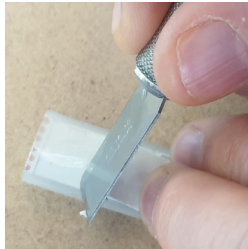
2. Only cut on marked cut points.



3. Using a pair of scissors cut the strip light to length. Use a single cutting motion in the center of the cut pads.

**End prep and sealing**

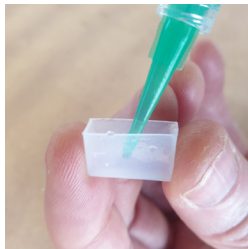
It is important that the adhesive backing is properly removed from the end required to be sealed, skipping this step may compromise the watertightness of the assembly and risk voiding warranty.



1. At the end to be sealed, peel back 20mm of the adhesive backing and very lightly score the adhesive 10mm from the end using a sharp blade.



2. Remove the adhesive tape from the score line to expose silicone underneath.



5. Half fill the end cap with silicone adhesive (supplied)

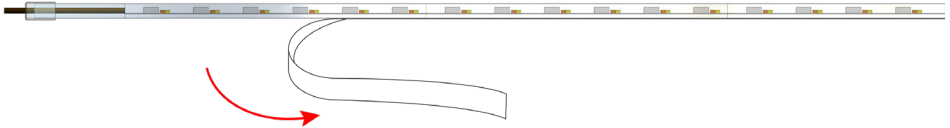


6. Fit end cap, clean up any excess adhesive. Allow to cure for 24hrs before handling.

**Mechanical Installation - 3M Adhesive Strip**

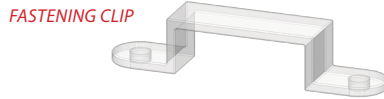
Ensure silicone adhesive (previous page) has fully cured before proceeding. Thoroughly clean the mounting surface using IPA, ensure it is dust and dirt free.

Peel back the 3M adhesive backing layer and firmly press strip light in place. Allow the adhesive to set for 24 hours before switching the strip light on.

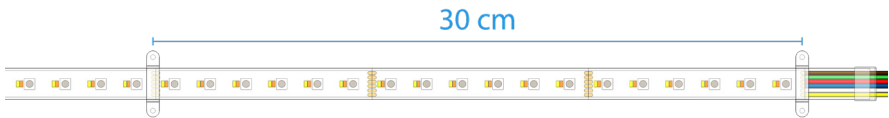


**Outdoor Installation - Mounting Fasteners**

For outdoor installation, wet areas or tight bend radii: it is recommended that mechanical fasteners are used in addition to the adhesive layer.

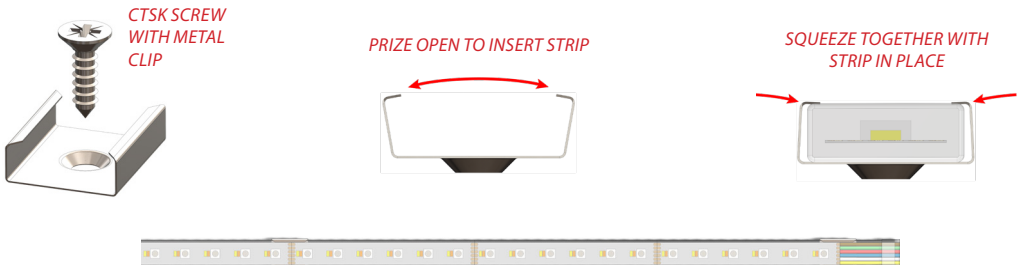


Using suitable screws the fasteners should be placed every 25 - 30cm apart and/or at either side of the bend



**Mounting Clips (Optional)**

For narrow mounting channels Lumishore can supply Stainless Steel metal clips. These are attached using a countersink screw. Gently prize open the metal clip and insert the strip light. Once in place gently squeeze the clip together over the strip light.



## Warranty

LUMISHORE Ltd warrants the **LUX Strip Light** to be free from defects in workmanship and materials for a period of two years, starting from the date of original purchase. Misuse, abuse, improper installation, neglect, improper shipping, damage caused by disasters such as fire, flood, and lightning, installation by unqualified personnel, unauthorized repair or modification will void this warranty. For the avoidance of confusion and doubt, non-compliance with all installation, maintenance and operating instructions in this document constitute non-conformance with warranty terms.

**The LUX Strip Light is designed to work with Lumishore LUX Strip Light Driver Module ONLY, do not use with other 3rd party drivers, this will invalidate the warranty.**

